

ORANGE COUNTY SHERIFF'S OFFICE



GENERAL ORDER

Effective Date: June 3, 2026	Amends - GO 8.1.2 (May 29, 2025)	Number: 8.1.2A
Distribution: All Personnel	Review Month: March	Reviewing Authority: HRD / Training
Subject: Taser Energy Weapon (TEW) – TASER 10		

This order consists of the following:

1. Purpose
2. Policy
3. Definitions
4. Procedures

1. Purpose

The purpose of this policy is to provide deputies with guidance and direction on the use of Taser Energy Weapons (TEW) - (formerly electronic control device ECD).

2. Policy

It is the policy of the agency that personnel performing official duties shall comply with applicable law, and specifically Fourth Amendment standards, by using a level of force that is objectively reasonable in light of the surrounding facts and circumstances. Courts examine the factors announced by the U.S. Supreme Court in [Graham v. Connor](#) to determine whether the use of force was objectively reasonable. A deputy must consider the following factors when deploying an Taser Energy Weapon (TEW): (a) the severity of the alleged crime at issue; (b) whether the suspect poses an immediate threat to the safety of the officers or others; and (c) whether the suspect is actively resisting arrest or attempting to evade arrest by flight. TEW's have been proven effective and are authorized for use in appropriate circumstances by trained personnel.

3. Definitions

- A. Active Physical Resistance - slight to moderate physical harm: a subject makes physically evasive movements to defeat a deputy's attempt at control. This may be in the form of bracing or tensing, attempts to push/pull away or not allowing the deputy to get close to him/her.
- B. Aggravated Physical Resistance - great bodily harm: A subject makes overt, hostile, attacking movements with or without a weapon with the apparent ability to cause death or great bodily harm to the deputy or others.
- C. Critical TEW Incident – When a TEW is deployed on a subject that results in serious/critical injuries or experiences a serious/critical health condition resulting from a TEW deployment and the subject is transported to the hospital, or when the subject dies.
- D. Deadly Force – Force that is likely to cause death or great bodily harm, permanent disability, or permanent disfigurement.

- E. Evidence.com- Axon Enterprise, Inc (Axon) solution for secure digital media storage and management.
- F. Function Test Mode –a mode where the device will conduct a fully automated diagnostic self-test.
- G. Neuromuscular incapacitation (NMI) – an involuntary stimulation of both the sensory nerves and the motor nerves which may interfere with an individual’s ability to utilize the affected muscles.
- H. Passive Physical Resistance – slight physical harm: A subject physically refuses to comply or respond to a deputy’s command. He/she does not make any attempt to physically defeat the actions of the deputy but forces the deputy to employ physical maneuvers, or use of a chemical agent to establish control.
- I. Securing Under Power – A technique used to secure a subject during the activation cycle, as instructed through training.
- J. TASER 10 Cartridge – A cartridge unique to the TASER 10 platform that has one singular probe in it.
- K. TASER 10 Magazine – A magazine that is inserted into the front of the TASER 10 device, that holds 10 cartridges. Duty magazines (black in color) are the only magazines authorized for field use. All other magazines (training/purple, HALT/blue, and inert/red) are for training use only.
- L. Taser Coordinator - A TEW Master Instructor designated to manage the agency’s Taser program. The coordinator shall develop training, ensure recertification criteria is met, distribute updates and information, and work with Material Control/Supply to track/maintain inventory.
- M. Taser Energy Weapon (TEW) - A device designed to disrupt a subject’s sensory nervous and motor nervous systems by means of deploying battery powered electrical energy sufficient to cause uncontrolled muscle contractions and override an individual’s voluntary motor responses.
- N. TEW Instructors - authorized agency members who have received advanced TEW and complied with Axon’s certification standards. They are authorized to teach agency approved TEW material. Only TEW Instructors who are current members of the training section are authorized to inspect, repair, replace, or download a TEW device.
- O. TEW Master Instructors - authorized agency members who have received advanced TEW training and have complied with Axon’s certification standards. They are authorized to inspect, conduct minor repairs, download a TEW, and can teach agency TEW user and instructor courses. They possess specialized training and experience pertaining to the TEW.

- P. Warning Alert - Prior to cartridge deployment, a feature that emits a bright light from the front of the Taser as well as a loud noise.

4. Procedures

A. Authorized Users

1. Only those who have satisfactorily completed the agency's approved training course shall be authorized to carry a TEW. Agency members issued a TEW shall be trained and recertified annually by the Training Section on the TEW.
2. All sworn personnel (Lieutenant and below) will be issued a TEW. Any exceptions to this policy will be approved by the Division Commander.
3. Uniform deputies issued a TEW shall carry the TEW when engaged in any uniform assignment, including enforcement related off-duty.

B. Device Readiness

1. Uniformed deputies shall carry the TEW on the duty belt, in an approved holster on the **non-dominant side** of the body. No portion of the TEW shall cross the mid-line of the body when holstered. Deputies can draw the TEW with either their non-dominant hand or a cross body draw with their dominant hand.
2. Non-uniformed deputies, when wearing a load bearing vest, shall have their TEW on their duty belt in a holster approved by the Training Section, unless approved by the Division Commander to be worn on the vest. The TEW holster shall be located on the non-dominant side of the load bearing vest consistent with agency training. Any holster other than the issued TEW Safariland holster shall be approved by the training section.
3. All TEW models with the software capability shall be preprogrammed to automatically shut down electrical discharge after 5 seconds, regardless of if the trigger is being held down.
4. The TASER 10 utilizes Axon Signal Technology and will activate all body worn cameras (BWC's) within range when the device is armed.
5. All TEW users shall be issued 10 duty cartridges and 1 duty magazine. All 10 cartridges shall be kept loaded in the magazine.
6. Only agency-approved battery power sources will be used in the TEW.
7. When carrying a TEW, deputies shall conduct a pre-operation function test of the TEW prior to the start of each shift. If a deputy believes the TEW is not operating properly, the deputy shall promptly contact a Training Section TEW Instructor to determine if further inspection of the device is needed. The Training Section TEW Instructor shall make arrangements to meet with the deputy to inspect the device when the Training Section TEW Instructor determines an inspection is warranted.

- a. A deputy who is assigned to a specialized unit and who does not carry a TEW while performing the normal duties of his or her job is only required to perform the pre-operation function test when the TEW is carried during an operational assignment. If the deputy does not routinely carry the TEW, they shall conduct a function test at least once a month.
 - b. A deputy shall be required to attend remedial training on the use of the TEW if a deputy has two accidental discharges of a TEW cartridge while performing function tests within a six-month period. The remedial training will be conducted by a Training Section TEW Instructor. Remedial training can also be conducted at a supervisor's request.
 - c. TEW users shall replace their TEW battery every thirty days, or sooner if the battery level drops to 20% or lower or as soon as practical following any intentional or unintentional discharge. Deputies are prohibited from taking a spare battery from the battery docking stations. Deputies shall only conduct a one-for-one battery swap.
 - d. Deputies are prohibited from swapping or borrowing a battery from one another. All battery replacements should be retrieved from the battery docking stations.
 - e. When placed into the Axon Dock ecosystem, the rechargeable battery pack will upload the weapon data and firmware automatically as well as recharge and condition the battery. Deputies shall not take the rechargeable battery pack out of the docking station until the status light is green.
8. Deputies issued a TEW shall be responsible for confirming the device is charged and in proper working order.

C. Deployment

1. Deputies are prohibited from using the TEW against a subject who only presents a level 3 (Passive Physical Resistance) or lower. Subject to the conditions below and the factors set forth in [Graham v. Connor](#), the TEW may be used when the subject presents a level 4 (Active Physical Resistance) or higher resistance.
2. The justifications for using the TEW at a level 4 or higher are the same officer/subject factors that exist in any other force decision. The initial activation of the TEW, as well as each additional activation, must be objectively reasonable under the standards set forth in [Graham v. Connor](#).

Note: For the TASER 10, two trigger pulls are needed to create a circuit and potentially achieve NMI. Additional cartridges may be deployed as necessary to achieve the desired effect. Additional trigger pulls and activations must still be justified.

3. TEW deployment may increase the risk of death or serious injury in certain circumstances, such as loss of balance, falls, change in momentum,

drowning, or loss of control of any mode of transportation, conveyance or machinery.

4. Deputies are prohibited from deploying a TEW in the following situations unless deputies can articulate exigent circumstances which make the deployment objectively reasonable:
 - a. on young children;
 - b. on the elderly;
 - c. on females reasonably believed to be pregnant;
 - d. on individuals with apparent physical disabilities impairing their mobility;
 - e. when the subject's fall may cause substantial injury or death (e.g., an elevated location such as a rooftop or building ledge, climbing over a fence or wall);
 - f. individuals in water; and
 - g. individuals in physical control of a motor vehicle in motion (i.e., vehicles, motorcycles, scooters, boats, bicycles).

If a deputy deploys a TEW in any of the circumstances listed in a-g above, the deputy must clearly document the exigent circumstances which made the deployment objectively reasonable.

When a deputy is unable to identify exigent circumstances justifying the deployment of a TEW on a subject in one of the circumstances listed in a-g above, the deputy should evaluate and consider other options such as verbal commands, hands-on techniques, OC spray, etc.

5. A subject's flight should not be the sole justification for TEW deployment. Additional factors that must be considered when making response to resistance decisions include:
 - a. Subject Factors:
 1. Seriousness of crime committed by subject.
 2. Size, age, and weight of subject.
 3. Apparent physical ability of subject.
 4. Number of subjects present who are involved, or who may become involved.
 5. Weapons possessed by or available to the subject.
 6. Known history of violence by subject.
 7. Presence of innocent or potential victims in the area.
 8. Whether the subject can be recaptured at a later time.
 9. Whether evidence is likely to be destroyed.
 10. Indicators of attack exhibited by the subject such as but not limited to; verbalization of a hostile/aggressive intent, hostile/aggressive posturing, muscular tensing of the body, etc.
 - b. Deputy Factors:
 1. Size, physical ability, and defensive tactics expertise of the deputy.

2. Number of deputies present or available.
 3. Immediate reaction in the case of sudden attack.
 4. Weapons or restraint devices available to the deputy to effectuate the arrest without TEW deployment.
 5. Legal requirements.
 6. Agency policy.
 7. Environment.
 - c. The above-mentioned subject and deputy factors are not all inclusive. All determining factors must be properly articulated by the deputy(s) employing physical force.
6. The TEW should not be intentionally aimed at a person's head, neck, chest or groin. The primary target will be the subject's back, when practical. If the primary target is not available, the secondary target area is front, lower, and center mass. Taser Energy Weapon cardiac risks are low, but not zero. To reduce cardiac risks (when practicable):
 - a. Target the back
 - b. Avoid targeting the chest and heart region unless justified
 - c. Avoid repeated or continuous exposures unless justified
 7. Deputies are prohibited from using the TEW in a punitive or reckless manner. Some examples include:
 - a. Using or threatening to use the TEW during an interrogation.
 - b. Using the TEW to awaken a person.
 - c. Using the TEW as a "Prod."
 - d. Using the TEW for "Horseplay."
 8. The TEW will not be used for extracting evidence or contraband.
 9. The TEW should not be used in any environment where potentially flammable, volatile, or explosive material (gasoline, natural gas, propane, flammable chemical sprays, etc.) are present.
 10. In preparation of deployment, the TEW will be pointed in a safe direction, taken off safe, and then aimed. Absent exigent circumstances:
 - a. a verbal warning shall be given unless doing so would place an individual at risk; TEW users may also initiate a warning alert in conjunction with a verbal warning;
 - b. only one deputy at a time shall deploy a TEW against a subject;
 - c. if present, a second deputy shall provide cover.
 11. Deputies should apply restraint techniques consistent with GO [8.1.3](#) and handcuff a subject under power as soon as practical. Each activation of the TEW is considered an additional response to resistance. To minimize the number of standard five second cycles necessary to restrain a subject, deputies shall attempt to secure the subject under power as soon as practical. Deputies shall continually assess the objective reasonableness of using the TEW, as well as the subject's submission/compliance and breathing ability, before applying additional cycles of the TEW.

12. A person in custody who displays evidence of, or complains of, an injury or illness shall receive appropriate medical attention as soon as possible. Deputies shall be guided by EMS or other competent medical authorities in determining the feasibility of utilizing restraints, considering the seriousness of the injury or illness coupled with the ability of the person to harm others or escape.
- D. A Person in Crisis
A Person in Crisis is used to refer to an individual exhibiting symptoms, such as severe agitation, hyperactivity, confusion, intense paranoia, and hallucinations, that appear suddenly but with short duration. The common causes of these symptoms could be, but are not always, poisoning from stimulant drugs, especially cocaine and methamphetamine. Deputies should refer to TB [95-11](#) for additional information about a Person in Crisis.
- E. Nothing in this order will prevent a deputy from utilizing any readily available object or empty hand technique as a weapon in circumstances or situations where the actions of a subject constitute Level 6 Resistance (Aggravated Physical Resistance) that could result in great bodily injury, permanent disability, permanent disfigurement or death to the deputy or others.
- F. The TEW should not be used in situations where deputies may need immediate Level 6 (Deadly Force) response (e.g. building searches, felony stops, armed encounters). Deputies should keep in mind the limitations as well as the capabilities of their issued TEW.
- G. After a deputy uses a TEW, the deputy should:
1. Handcuff the subject to minimize the threat of injury to either the deputy or the subject.
 2. Remove the TEW probes at the earliest opportunity. The TEW probes will be removed in accordance with the agency approved training. TEW probes that have struck sensitive body areas (head, neck, chest, groin) or have caused a clear injury must be removed by properly trained medical personnel. When probes are in these areas the deputy shall request EMS for transport to a hospital emergency department.
 3. Confirm the TEW evidence is handled in accordance with GO [10.1.1](#), Evidentiary Property. Deployed cartridges, probes and wires should be collected and packaged as evidence.
 4. TEW probes that have struck a person's body will be considered a biological hazard and packaged appropriately in accordance with GO [8.1.2](#).
 5. Deputies shall not collect the TEW evidence when a Critical TEW Incident has occurred. Supervisors shall be responsible for contacting the on-call CSI for evidence collection.

6. Request emergency medical services to provide medical treatment and transport if the subject shows signs of injury, complains of a medical emergency, or requests medical treatment after the deployment.
7. Document all injuries in the incident report.
8. Photograph all significant injuries and impact points, if possible. Photographic evidence will be handled consistent with agency policy.

H. Reporting and Accountability

Personnel who supervise agency members carrying a TEW must complete the new user course or approved TEW supervisor training, as well as a training session addressing supervisory response following TEW deployments.

When the subject's resistance level is as level 4 or higher and a deputy removes the TEW from the holster and by its mere presence or use of the warning alert achieves compliance from a subject without deploying the TEW (e.g. issuing verbal warnings), the deputy is not required to complete the Response to Resistance Report in [Blue Team](#), but is required to document the compliance in the initial or supplement report. If assisting deputies also display their TEW during this type of situation and a supplement report is not generated, it will also be documented in the primary deputy's initial report. The primary deputy does not need to include him/herself in this portion.

For all TEW deployments, deputies shall complete the Response to Resistance Report in [Blue Team](#). Deputies shall notify their supervisor as soon as practical after each intentional or unintentional discharge, with the exception of function pre-operation function tests conducted at the beginning of a shift and training exercises. A supervisor is only required to respond to unintentional discharges involving a deputy/suspect confrontation or when a deputy or third party is contacted by the TEW. For all other unintentional discharges, the deputy's supervisor is not required to respond but shall confirm the deputy completes the Response to Resistance Report in [Blue Team](#) and forwards it to the supervisor by the end of the deputy's shift.

Subsequent to all TEW deployments, deputies shall also request a "Taser Download" located in the [portal](#) after the TEW battery has been uploaded. This request shall occur within 72 hours of the deployment.

In response to resistance situations involving a deputy/suspect confrontation, a supervisor shall respond to the scene of every discharge and conduct a review of the deployment to confirm compliance with agency policy. If the supervisor is unable to respond to the scene, the supervisor shall document the reasons which made it impractical to respond.

1. The supervisory review should include:
 - a. speaking with the involved deputy;
 - b. speaking with the suspect consistent with training;

- c. documenting the presence of any witnesses and their verbal statements, and documenting whether witnesses were willing to provide written statements;
 - d. confirming that photographs are taken of significant injuries and impact points, if possible;
 - e. confirming TEW evidence (i.e. cartridges, probes and wires) is collected. For Critical TEW Incidents, the on-call CSI shall be contacted;
 - f. confirming that a recording from a BWC or in-car camera is collected and placed into evidence provided the deputy has a BWC and/or the deputy's vehicle is equipped with an in-car camera and the recording depicts the response to resistance incident; and
 - g. reviewing the TEW data once obtained.
2. Professional Standards shall review all TEW cases in which:
- a. the subject dies or suffers serious bodily injury after deployment of the TEW; If a critical incident has occurred a supervisor can use the Critical Event TEW [Checklist/Analysis and Evidence Collection Checklist](#) to assist them in their investigation.
 - b. the subject is exposed to prolonged or excessive cycling of the TEW without sufficient documentation to establish the objective reasonableness of each activation;
 - c. the TEW appears to have been used in a punitive or abusive manner;
 - d. there appears to be a material deviation from the TEW policy.

NOTE: For the situations listed in 2(a-d) above, Professional Standards shall document the review of the Response to Resistance Report in [Blue Team](#) and other relevant records. If Professional Standards determines that the deputy's actions were objectively reasonable, no further investigation is required. However, Professional Standards shall conduct an investigation when the records fail to establish the objective reasonableness of the deputy's actions.

- I. If the supervisor has reason to believe that a violation of agency policy has occurred that could result in discipline, the supervisor shall adhere to GO [5.1.2](#).

The responding supervisor shall confirm that the [Response to Resistance](#) Report is completed within 7 days after the TEW deployment and forwarded through the deputy's supervisor for review. The supervisor has discretion to allow additional time for completion of the [Response to Resistance](#) Report.

- J. Downloading Data
 - 1. Within 72 hours following a TEW deployment, the deputy involved shall exchange their TEW battery at a battery docking station. The deputy shall then request a retrieval of the Taser data via the SharePoint [portal](#). A TEW Master Instructor shall then retrieve the Taser data and forward it to the deputy's supervisor for review. The supervisor has discretion to allow additional time for the deputy to request the Taser data. The deputy's

supervisor shall confirm the data download from the TEW is received, reviewed and attached to the Response to Resistance Report in [Blue Team](#). Deputies shall also report to Material Control/Supply to obtain new cartridges to replenish the deployed ones.

2. Only a Training Section TEW Master Instructor, may download Taser data from Evidence.com.
 3. Supervisors or managers may request a download at any time. Any deputy issued such an order shall immediately respond to this request as instructed by the supervisor.
 4. Taser data to include uses and effectiveness will be submitted to the agency's annual Response to Resistance report.
 5. A data download from a TEW will be conducted prior to any factory repairs/maintenance.
- K. **Accountability**
Supervisors of agency members with TEW's shall utilize the Axon performance program to monitor compliance with battery swaps and function tests. Supervisors will review the data to confirm the device is working properly and to identify activations that appear to be inconsistent with agency policy. Any deficiencies or discrepancies identified will be handled via the Chain of Command.
- L. **Malfunction, Physical Damage, or other Issues with the TEW**
If your Taser Energy Weapon experiences a malfunction, physical damage, or any other issue, please follow the established procedure outlined below.
1. **Time-Sensitive Issues:** If the device requires immediate repair or exchange to continue your shift, contact the Communication Center and request the on-call Taser instructor.
 2. **Non-Urgent Issues:** For matters that do not require immediate attention, submit a detailed email to SO-Taser@ocsofl.com
 3. ***Please note that Training section members should not be contacted directly regarding Taser-related concerns.***

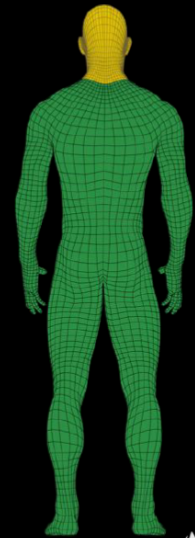
Use Preferred Target Zone: **Rear** When Practicable

Below neck (**green zone**)

- Large muscles
- Avoid head and neck

The preferred target zone on the back begins just below the neck and extends all the way down the legs.

The back is the most preferred target area because it contains larger muscle groups and reduces the risk of hitting sensitive body areas.



VERSION 24 | ©2025 Axon Enterprise, Inc.



Use Preferred Target Zone: **Front** When Practicable

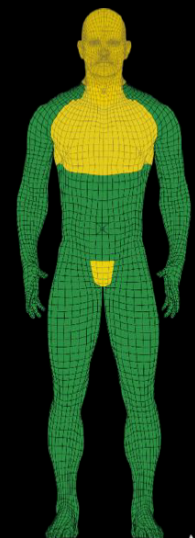
Lower torso (**GREEN ZONE** below chest)

More effective than hitting the chest

- Larger muscles (legs)
- Split the beltline

REDUCES RISK of hitting sensitive body areas (see product warnings).

DO NOT intentionally target the head, eyes, throat, chest, or genitals unless legally justified.



VERSION 24 | ©2025 Axon Enterprise, Inc.





Critical Event TASER Energy Weapon Checklist / Analysis and Evidence Collection Checklist

This checklist is intended to be a wide-ranging list of evidentiary items your agency may desire to gather as part of an investigation involving the use of a TASER® energy weapon. Each agency will determine its own investigation procedures and practices.

Event date and time: _____

Department Case No.: _____

Energy Weapon Operator(s): _____

Subject's Information:

- Gender
- Age
- Height
- Weight
- Build (very thin, skinny, medium build, muscular, large, overweight, obese)
- Dispatched information regarding the subject
- Officer's observations of subject
- Subject's information reported to officer (by subject or witnesses on scene)
- Pre-event behaviors of the subject
- Post-event behaviors post the last application of the energy weapon, (e.g., talking, yelling, resisting, standing up, sitting up, cuffed, unconscious, cooperative, etc.)
- Type of physical exertion by the subject (running, fighting, pacing, throwing objects, resisting, struggling, etc.)
- Duration of the subject's physical exertion
- Under the influence of drugs and/or alcohol
- Emotionally disturbed person (EDP), mental illness, or serious psychological distress (SPD)
- Did the subject experience loss of consciousness
- If subject experienced loss of consciousness, what is the time gap between conclusion of energy weapon discharge and loss of consciousness – be as specific as possible timing wise.
- All signs of life (pulse, breathing, moaning, groaning, talking, etc.) after conclusion of energy weapon discharge
- Subject's criminal history
- Subject's drug history
- Subject's medical history (e.g., diabetic, history of epilepsy or seizure)
- Subject's psychiatric history
- Subject's prescription history (including compliance)
- Subject's rehab history

If a death occurred temporal to the energy weapon use:

- Obtain hair and nail samples for forensic and medical testing
- Obtain pre-mortem body core temperature
- Obtain pre-mortem blood samples
- Obtain post-mortem body core temperature as soon after death as reasonable
- Obtain post-mortem fluid samples (including where, when, how taken) (drug redistribution concerns)
- Obtain annotated timeline of events between energy weapon deployment and time of death:
 - o Whether or not the subject was initially responsive (walking, talking, etc.) after energy weapon exposure(s) and if so, for how long. List the complete record of signs of life post- energy weapon use.
 - o Length of time between the energy weapon exposure and subject's collapse Approximate time that subject went into distress (or died) after the last energy weapon deployment

Data Downloads: As soon as reasonable, download the energy weapon data and sync the clock if necessary to account for any time drift. Download all recording devices that may have captured the incident. For best chain of custody record, security safeguards, and ease of use, please upload all data and video to Axon Evidence.

Contact Sr. Investigations Engineer Bryan Chiles at: w: +1-480-502-6260, c: +1-602-384-8417 or email: forensics@axon.com for analysis of TASER energy weapon logs – including Pulse Graphs, Event Logs and potential information that can be shared with Axon to determine the weapon performance, TASER CAM Recorder issues, or if there are any Axon Body worn camera issues.



Critical Event TASER Energy Weapon Checklist / Analysis and Evidence Collection Checklist

- Collect each energy weapon used or present at incident for data download and clock sync
- Record each energy weapon model and serial number
- Record each energy weapon cartridge model and serial number
- Identify which energy weapons were used/deployed during incident
- Download all audio and video recordings from incident (including on-officer and in-vehicle recordings)
- Download each energy weapon present at the incident (agency should determine if it will provide a copy of the energy weapon's data download to the energy weapon user before the officer is required to provide a force report.)
- Consider placing each energy weapon used on subject into evidence during investigation
- Consider testing the energy weapon's electrical output to determine if it was operating within the manufacturer's specifications

Acquire any time stamped logs/information:

- 911 and agency dispatch time logs and recordings
- Emergency Medical Services (EMS) dispatch and time logs
- Hospital emergency room (ER) dispatch and time logs
- Other time stamped/logs

Create annotated timeline of the incident:

- Create annotated timeline of all reasonably accurate documented times regarding the incident
- Collect any relevant body-worn camera, in-car and/or CCTV video

Record how each energy weapon was used during the incident:

- What specific model type of energy weapon was deployed (e.g., TASER M26, X26, X3, X2, X26P, TASER 7 or TASER 10)
- Energy weapon drawn from holster
- Energy weapon pointed at subject
- Energy weapon LASER activated at subject
- Energy weapon warning arc or warning display (TASER 10)
- Energy weapon drive-stun without the cartridge(s) (not applicable for TASER 10)
- Energy weapon drive-stun with the cartridge(s) but without any probes attached (not applicable for TASER 10)
- Energy weapon probe deployment (one set of probes)
- Energy weapon probe deployment (two sets of probes from a single energy weapon)
- Energy weapon probe deployment (two sets of probes from two separate energy weapons)
- Energy weapon three-point deployment (with single probe connection)
- Energy weapon three-point deployment (with both probes from single cartridge connection)
- Energy weapon multi-point deployment (with multiple cartridges/probes from single energy weapon with cross-connect)
- Energy weapon reactivation of deployed probes
- TASER 10: two-cartridge deployments (one pair of probes deployed)
- TASER 10: more than 2 cartridge deployments (record how many probes were deployed)

Additional evidence identification and collection:

- Photos of wounds, probe impacts, and/or drive-stun marks (with scale for reference in the photo)
- Photos of subject to document where injuries are present and where injuries are not present
- For the X26 energy weapon, keep the original battery in the energy weapon (the X26 requires the battery to always remain inserted to keep the integrity of the energy weapon's internal clock).
- PROBES AND WIRES ARE EVIDENCE! Keep the cartridge probes and wires. Do not let EMS place probes in sharps containers for disposal.
Do not wind the wire up – maintain wire integrity as best as possible.
- Taser 10: Record the serial number of deployed cartridges. Associate the cartridges with the deployment logs on Axon Evidence.
- Collect AFID tags (where applicable) from the TASER cartridge(s) and note their locations at the scene. If TASER 7 weapon was deployed, upload the logs from the battery in a dock, then determine the cartridge serial numbers on Axon Evidence.
- Collect and maintain as evidence the subject's clothing in the event that a probe penetrated or was attached to the clothing or for later analysis of potential probe impact sites.



Critical Event TASER Energy Weapon Checklist / Analysis and Evidence Collection Checklist

Record the TASER Energy Weapon Deployment Circumstances:

- Officer's objective for each energy weapon deployment or discharge
- Any energy weapon discharge after subject surrendered
- Any energy weapon discharge after subject handcuffed or otherwise restrained (and note the type of restraint)
- Any spark/function tests during the incident
- Any cartridge removal during the incident
- Any cartridge reattachment on energy weapon after removal during the incident
- Any cartridge discarded after removal from energy weapon during the incident
- Energy weapon discharge duration(s), and number of cycle(s), with/without cartridge in place, mode of deployment
- Distance from the front of the energy weapon cartridge to the subject at the time of the probe deployment(s)
- For each probe deployment:
 - Did probe(s) from a cartridge make contact with the subject or the subject's clothing
 - Did probe(s) penetrate the skin
 - Specific location of each probe that made contact with the subject (see diagram below) and distance in inches between the probes
 - Match up probes and clearly identify them (i.e., top vs bottom, cartridge 1 vs cartridge 2. For TASER 10, identify the probes' order of deployment.
 - Distance between the probes (probe spread) for each pair of probes
 - For multi-shot energy weapons, were probes from more than 1 cartridge part of the same deployment cycle
 - Did any probe land or fall on the ground; if so, record the type of surface the probe fell onto and save and mark the probe
- For each drive-stun discharge, note any drive-stun follow-up to a probe deployment or any combination of the probes and drive-stun used together
- For each drive-stun discharge, was the drive-stun with or without expended cartridge in place on energy weapon
- Effectiveness of the discharge (did subject respond as expected, was there a change in the subject's behavior). If the energy weapon did not perform as expected, the reason for ineffectiveness (e.g., single probe hit, a probe clothing disconnect, intermittent connection, wire breakage, low muscle-mass deployment, small spread between the probes [less than 12 inches], low or dead battery pack, energy weapon dropped, energy weapon subjected to a high-moisture (wet) environment, etc.).
- Any other use of force employed on the subject other than an energy weapon, if so what type(s)
- Weather/environmental conditions
- Surface that the exposure occurred on (i.e., pavement, grass, dirt, carpet, etc.)

If an Automated External Defibrillator (AED), defibrillator, or heart monitor was used on the subject:

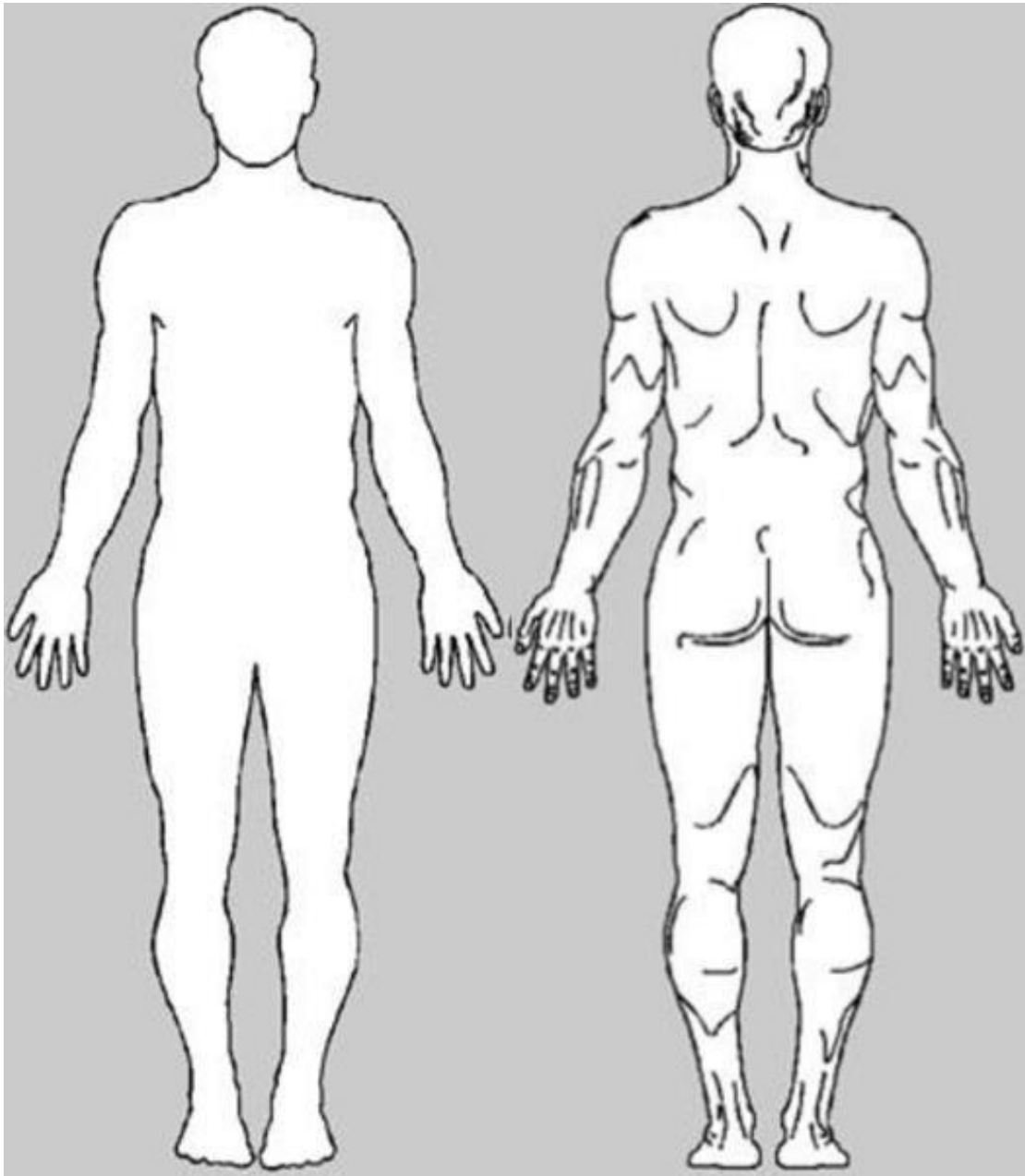
- Type of device used, manufacturer, model number, serial number, and who owns the device
- Recorded cardiac rhythms and times of each monitored or recorded rhythm
- Did the device indicate a shockable rhythm?
- Did the device operator deliver a "manual" defibrillation shock and if so, how many shocks?
- Did the device shock the subject and, if so, what was the cardiac rhythm after each shock?
- Did the device report "no shock?"
- Obtain a printout of the strips and event records from the device
- Obtain an electronic download of the event from the device
- Obtain a maintenance download from the device

See chart on next page for probe/drive stun locations



Critical Event TASER Energy Weapon Checklist / Analysis and Evidence Collection Checklist

Clearly and accurately mark the locations of the probe or drive-stun exposures (for all models except TASER 10, it is important to identify the probe pairs from the same cartridge)



When using the diagram, please indicate the distance between the probe locations. Be sure to clearly identify both the top and bottom probes (consider using “OT” for the top probe and “OB” for the bottom probe; an “X” for a drive-stun; and a “3X” for a 3-point discharge. For multiple deployments use OT and OB; OT2 and OB2; OT3 and OB3; etc.) For TASER 10, mark the probe locations in order of deployment (i.e., O1, O2, O3, etc.)

For any media inquiries related to the TASER energy weapons and how they function or their general safety, please direct the media to Axon’s Media Hotline at 480-444-4000 or press@axon.com.

The Delta Logo, Axon, and TASER are trademarks of Axon Enterprise, Inc., some of which are registered in the U.S. and other countries.