

St. Louis County Police Department
Annual Report



2012



"Committed To Our Citizens Through Neighborhood Policing"



Colonel
Timothy E. Fitch
Chief of Police

The Annual Report of the St. Louis County Police Department for the period of January 1 to December 31, 2012, is herewith respectfully submitted to the Honorable Charlie A. Dooley, the members of the St. Louis County Council, the Board of Police Commissioners and to the citizens of St. Louis County.

The report not only expresses our accomplishments, but it also outlines areas in which we strive to improve. Our Vision and Mission Statements are included in this report and clearly express the seriousness with which we hold our responsibilities.

The communities patrolled and served by the St. Louis County Police Department maintain a lower crime rate than National, State and the combined crime rates of the other municipalities in St. Louis County. Despite the poor economy and high unemployment, Part I crimes reported in 2012 in the areas patrolled by the St. Louis County Police Department were the lowest since 1969. This outstanding achievement emphasizes the continued dedication and commitment of our patrol officers, detectives and support personnel.

In 2012, the City of Dellwood contracted for patrol services with the St. Louis County Police Department. Since taking command of the department, the City of Dellwood's Part I crimes have been reduced by nine (9) percent.

An aggressive campaign in 2012 to combat heroin overdoses in St. Louis County resulted in a thirty (30) percent decrease in heroin deaths, while heroin deaths in the region continued to grow.

As you will see in reading this report, I am proud of the men and women of the St. Louis County Police Department and am pleased to present this report for your review.

Sincerely,

A handwritten signature in blue ink, which appears to read "Col. E. Fitch". The signature is fluid and cursive.

COLONEL TIMOTHY E. FITCH
Chief of Police

Our Command Staff

Colonel Timothy E. Fitch
Chief of Police

Lieutenant Colonel Ken Cox
Division of Criminal Investigation

Lieutenant Colonel Kenneth Gregory
Division of Patrol

Lieutenant Colonel Terry Roberds
Division of Special Operations

Executive Director William Howe
Division of Operational Support

Captain Jeffrey Bader
City of Fenton Precinct

Captain Mary Barton
Bureau of Staff Services

Captain Jon Belmar
Bureau of Patrol Support

Captain Chuck Boschert
West County Precinct

Captain Mike Dierkes
Affton Southwest Precinct

Captain Troy Doyle
North County Precinct

Captain Kurt Frisz
Central County Precinct

Captain Thomas Grimm
Bureau of Criminal Identification

Captain Guy Means
MetroLink Unit

Captain Stephen Sack
Bureau of Communications

Captain James Schneider
South County Precinct

Captain Larry Stulce
Bureau of Drug Enforcement

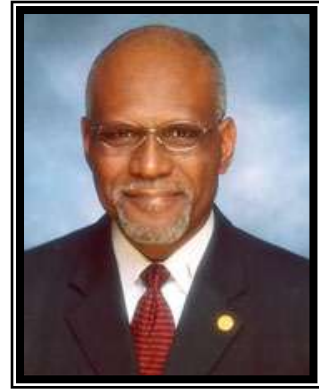
Captain Ken Williams
City of Wildwood Precinct

Director Michael Smiley
Office of Emergency Management

DEPARTMENT ORGANIZATION

The Board of Police Commissioners is defined by section 4.270 of the St. Louis County Charter. The board consists of five civilian members who are residents of St. Louis County and do not hold any other public office. The members of the board are appointed by the County Executive to serve three-year terms, with the approval of a majority of the County Council.

The Board of Police Commissioners appoints the Chief of Police who manages the Department's day-to-day activities. The board has the final authority to formulate policies that govern the operation and conduct of Department employees and hears appeals from citizens and employees. The board formulates standards for the Department's deputization program and regulates and licenses all private watchmen, security officers and couriers serving or acting in the county.



ST. LOUIS
COUNTY
EXECUTIVE

Charlie A. Dooley



BOARD OF POLICE COMMISSIONERS

Colonel John N. Saracino
Member

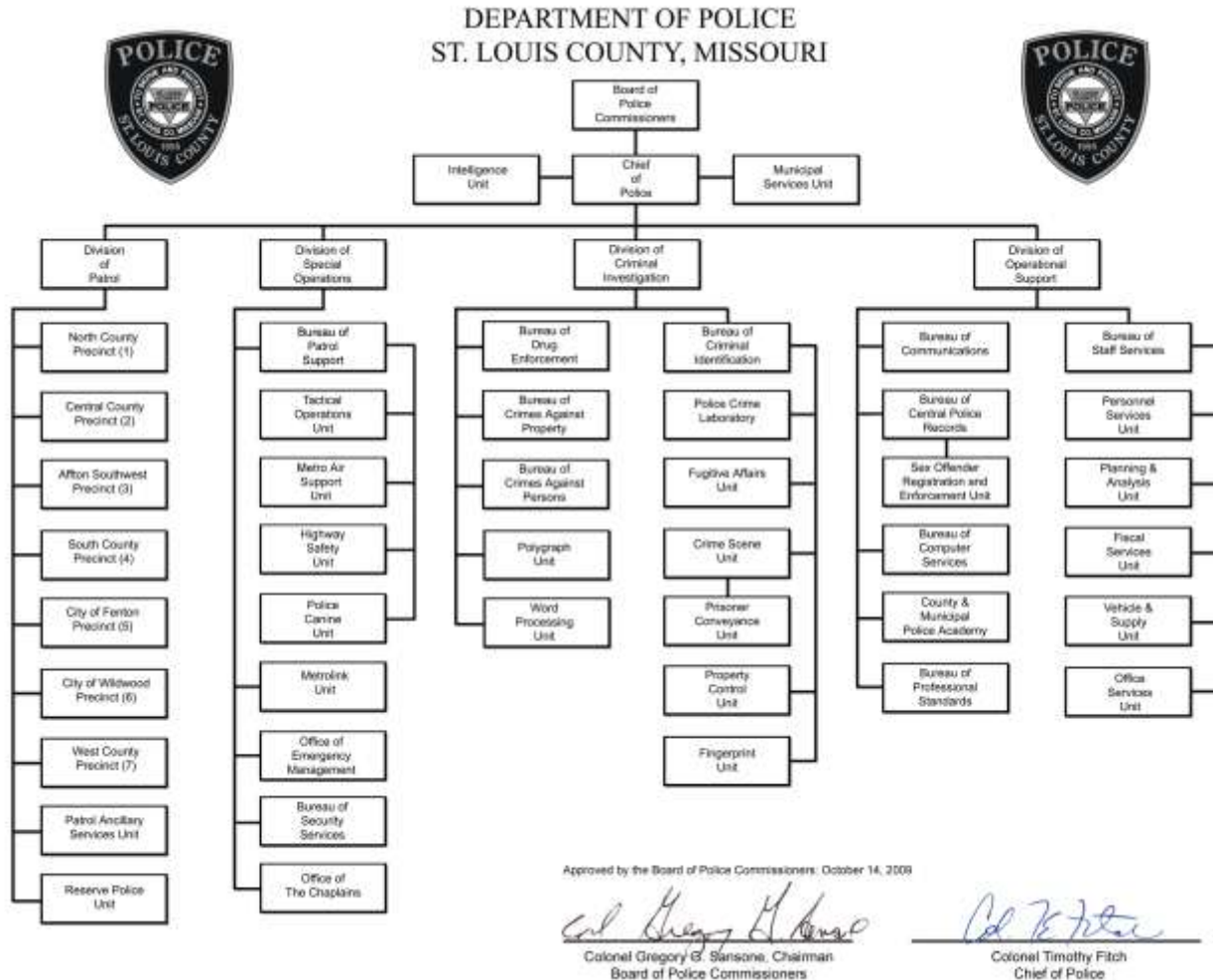
Colonel Roland Corvington
Member

Colonel Gregory G. Sansone
Chairman

Colonel Floyd C. Warmann
Vice-Chairman

Colonel Raymond T. Wagner, Jr.
Secretary

DEPARTMENT ORGANIZATION



VISION STATEMENT

The St. Louis County Police Department will maintain the highest standards of excellence in all facets of policing and will be considered by our community and our profession as one of the premier law enforcement agencies in the Nation.

MISSION STATEMENT

The mission of the St. Louis County Police Department is to work cooperatively with the public and within the framework of the Constitution to enforce the law, preserve the peace, reduce fear and provide a safe environment in our neighborhoods.

STATEMENT OF VALUES

The St. Louis County Police Department exists to serve the community by protecting life and property; by preventing crime; by enforcing the laws; and by maintaining order for all people.

Central to our mission are the values which guide our work and decisions. These help us contribute to the high quality of life in St. Louis County.

The public trust and confidence given to those in the police service requires the adoption and compliance of stated values, which are the foundation upon which our policies, goals and operations are built.

In fulfilling our mission, we need the support of citizens and elected officials in order to provide the quality of service our values commit us to providing.

We, the men and women of the St. Louis County Police Department, value:

HUMAN LIFE –

We value human life and dignity, as guaranteed by the Constitution.

INTEGRITY –

We believe that integrity is the basis for community trust.

LAWS AND CONSTITUTION –

We respect the principles that are embodied in the Constitution of the United States. We recognize the authority of federal, state and local laws.

EXCELLENCE –

We strive for personal and professional excellence.

ACCOUNTABILITY –

We are accountable to the people of the community and to each other.

COOPERATION –

We believe that cooperation with the community and the members of our organization will enable us to combine our diverse backgrounds, skills and styles to achieve common goals beneficial to the community and the St. Louis County Police Department.

PROBLEM-SOLVING –

We are most effective when we can identify and solve community problems.

OURSELVES –

We are dedicated, caring and capable people who are performing important and satisfying work for the people of St. Louis County.



1955 Organized
828 Actual Sworn Officers
251 Actual Civilian Personnel
90 Employees Hired
45 Employee Separations
60 Promotions (Civilian and Sworn)
16 Employees Retired

Authorized Rank Structure

1 Chief of Police
3 Lieutenant Colonel
13 Captain
29 Lieutenant
92 Sergeant
710 Police Officer

37 Average Age (Police Officer)
9 Average Years of Service (Police Officer)
\$99,427,949 Actual Expenditures
22 Facilities
375 Marked Patrol Vehicles
146 Unmarked Sedans
3 Motorcycles
49 Bicycles
44 Specialty Vehicles
7 Helicopters
1 Airplane
6 Canine
799,796 Total Phone Calls for Service
395,540 911 Phone Calls
404,256 Non-Emergency Phone Calls
2,191 Average Daily Number of Phone Calls
370,811 Directed Calls To Police Officers by Dispatchers
363,795 Self-Initiated Calls By Police Officers
76,715 CARE Reports Made



2012 DEPARTMENT HIGHLIGHTS

Of the many events that took place within St. Louis County in 2012, the highlights include the addition of a new patrol contract, a national award for an anti-heroin campaign, a DARE officer receiving top honors and a new-to-the-region undercover delivery operation.

City of Dellwood Police Services Contract

At the end of 2011, the St. Louis County Police Department was requested to provide leadership to the police department for the City of Dellwood in North St. Louis County. The St. Louis County Police Department was asked to provide a top-down review of the department with a focus on personnel and evidence handling. The City chose to contract with St. Louis County Police for full-time law enforcement services beginning on April 13, 2012. Some of the former Dellwood Police Department officers were hired by St. Louis County. The City of Dellwood Detail is staffed by one lieutenant, one sergeant and twelve police officers.



Outstanding Community Prevention Effort Award

Members of St. Louis County Police Department's Multi-Jurisdictional Drug Task Force received the 2012 "Outstanding Community Prevention Effort Award" in Washington, D.C. in December 2012 for efforts surrounding the "Not-Even-Once" campaign. Director Gil Kerlikowske of the Office of National Drug Control Policy presented the award. The goal of the "Not-Even-Once" campaign was to prevent young people from experimenting with heroin and to reduce the overall number of heroin overdose fatalities in St. Louis County. After rising to a total of 91 deaths in 2011, heroin fatalities in St. Louis County decreased by 30 percent in 2012.



Kathy Kelly DARE Officer of the Year

St. Louis County Police Officer Kathy Kelly was awarded the 2012 National DARE Officer of the Year, the top honor among the fifty candidates from each state. Officer Kelly is a 27 year veteran of the Department and has been a DARE instructor since 1991. In 2008, Officer Kelly was chosen as the Missouri DARE Officer of the Year. DARE, or Drug Abuse Resistance Education came to St. Louis County in 1991 as a program to help elementary and middle-school students make correct choices about drugs and other aspects about their lives. The program



has evolved over the years and is now aimed at being more relevant for the problems students face in today's world with lessons on topics such as communication, internet safety and peer pressure. Educators have commended Officer Kelly for what they call her "second career" as a teacher and for her desire to become involved with the staff and teachers. Officer Kelly estimates that she has worked with 21,000 students in sixty different schools. She has no desire to retire quite yet as she enjoys her job.



Undercover Pizza Delivery to combat robberies

After the second robbery/homicide of a pizza delivery driver in six months, the St. Louis County Police Department directed officers who typically work undercover to assist with delivering pizzas in high crime areas. Undercover officers were selected because they have both the police experience to make an arrest and undercover training to give them an extra edge at noticing subtle nuances among potential suspects. "If it's a legitimate pizza order, they're not going to know it's a police officer," Chief Fitch said. "If a person has a sinister motive and they decide to rob one of our officers, it's not going to be pretty." A town hall style meeting was held



where food delivery companies were invited to attend and learn about ways drivers can stay safe as well as danger signs to watch out for. The success of the program is evidenced by the elimination of robberies and assaults against delivery drivers in St. Louis County for the remainder of 2012, while escalating in other parts of the St. Louis region.

OFFICE OF THE CHIEF OF POLICE

In addition to the Chief of Police, the Office of the Chief is comprised of the Intelligence Unit and the Municipal Services Unit. The following is a brief summary of their accomplishments for 2012.

The primary focus of the Intelligence Unit is to investigate organized crime, public corruption and terrorism, as well as monitoring groups that seek to create public disorder. The existence of organized criminal enterprises (traditional organized crime, gangs, or terrorists) makes it necessary for law enforcement to proactively gather and analyze data. The traditional reactive approach to crime control is not always effective when dealing with the scope and nature of organized criminal enterprises. The Intelligence Unit works closely with federal law enforcement agencies. Members of the Unit are also detached to various task forces, including the FBI Joint Terrorism Task Force, FBI Gang Task Force and the Social Security Administration's Cooperative Disability Investigative Unit. Also, various joint investigations are conducted with other federal and state agencies on short term basis as needed.



The St. Louis County Police Department is the host agency for the St. Louis Urban Area Security Initiative (UASI) Fusion Center. This fusion center is one of the seventy-two Department of Homeland Security (DHS) nationally recognized fusion centers. Representatives of the Intelligence Unit are assigned to the St. Louis Fusion Center: Terrorism Early Warning Group, a partnership consisting of federal, state and local agencies of law enforcement, fire, public health, emergency management and private sector entities. This allows for a multijurisdictional/multidisciplinary approach to the collection, analysis and dissemination of information related to terrorism. The mission of the group is to share information and enhance preparedness capabilities in the St. Louis region. They detect, defend against and/or respond to acts of terrorism. The St. Louis UASI region is comprised of eight counties on both sides of the Mississippi River.

The Municipal Services Unit continued to coordinate the provision of services available to the municipalities by the St. Louis County Police Department. Members assigned to the Unit serve as liaison officers, working closely with police departments and other governmental agencies throughout the states of Missouri and Illinois, to deliver quality law enforcement services.

THE DIVISION OF PATROL

The Division of Patrol provides the primary law enforcement function of the police department. This is accomplished by maintaining a uniform presence 24 hours a day and serving our citizens with highly trained officers, who respond to any emergency or call for service.

The St. Louis County Police Department, Division of Patrol, prides itself on its unwavering commitment to the communities that it serves. The Division of Patrol is comprised of 543 uniformed police officers and supervisors, divided into seven precincts, located in unincorporated St. Louis County and seventeen municipalities. The Division provides the primary law enforcement function of the Police Department.



The Division of Patrol continuously strives to meet the needs of the community. This is done by providing a well-organized command structure leading dedicated police officers who are professional, educated and committed to providing a responsive law enforcement presence to the community on an around-the-clock basis. The Division of Patrol's commanding officer provides the leadership for the "day to day" operations from his office in Police Headquarters, located at 7900 Forsyth Boulevard.



Each precinct is strategically located throughout St. Louis County to ensure a quick response to a variety of calls for service, quality of life issues or any other concerns a community may encounter. A police captain commands each precinct with the assistance of lieutenants and sergeants. The patrol officers within the precincts provide direct support to the citizens of St. Louis County 24 hours a day. In April of 2012, the City of Dellwood partnered with St. Louis County for police services.

DIVISION OF PATROL

The Division of Patrol maintains a uniform presence 24 hours a day and provides its citizens with highly trained officers who respond to any emergency or call for service. In 2012, patrol officers handled over 545,000 directed and self-initiated calls. Within the Division are Neighborhood Policing Officers who address community concerns by organizing Neighborhood Watch Groups and community activities such as Halloween Safety Centers and National Night Out. Also within the Division are School Resource Officers who are assigned to public schools by contract. These officers serve students, teachers and families through early intervention and problem solving, as well as investigate and monitor all reports received through the Safe Schools Hotline.



Realizing police officers may come into contact with individuals who are in a state of mental crisis, the Department, in 2003, established a collaborative effort with local hospitals, doctors and the Mental Health Association of Greater St. Louis. This collaboration developed effective protocols to resolve complex and often critical situations experienced by those in mental crisis and who are in need of immediate assistance. Patrol officers and supervisors receive forty hours of classroom training and practical application at the St. Louis County and Municipal Police Academy to gain the ability to identify and recognize a variety of mental illnesses. They also learn appropriate protocols that have proven successful in providing a resolution to the



crisis in the safest manner. The St. Louis County Police Department has been a leader in the implementation of this program in the St. Louis area and the Division continues to train additional certified Crisis Intervention Team (CIT) officers on a regular basis, including advanced CIT refresher courses. In 2012, officers assigned to the Division of Patrol wrote 1,085 CIT reports involving people in mental crisis.

Some of the major accomplishments in 2012 from the Division of Patrol consist of officers issuing 77,223 tickets including moving, non-moving and radar tickets. In

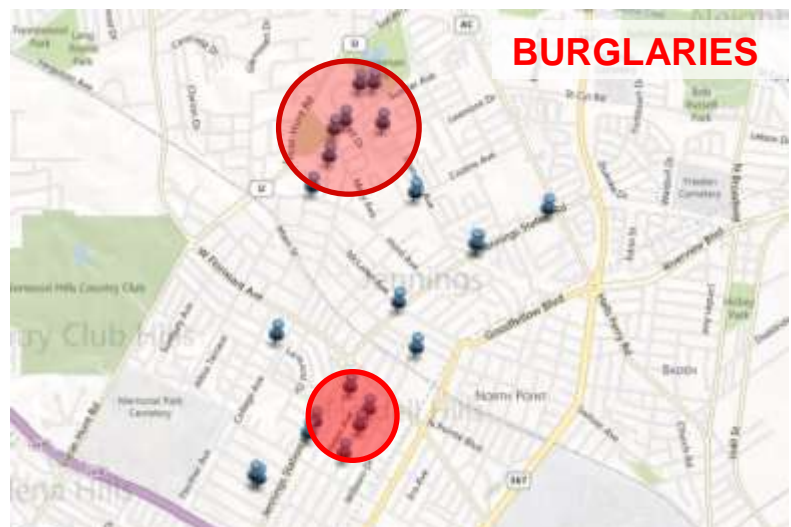
2012, officers assigned to the Division of Patrol made 24,858 felony and misdemeanor arrests. Officers seized almost 2,200 firearms and made 1,007 DWI arrests in 2012.

Working closely with the community, the Department's Neighborhood Enforcement Team has taken a proactive, neighborhood approach to crime prevention and continues a commitment to removing serious and violent offenders from the streets.

In addition, the Department recognized that juvenile offenders were responsible, in large part, for a variety of serious crimes being committed in our communities. neighborhood policing officers, precinct detectives and gang intelligence officers worked alongside patrol officers to explore solutions for decreasing juvenile crime. Enforcement initiatives and coordinated after-school and weekend activities provided a positive community influence. In 2012, patrol officers made 2,736 arrests involving juvenile offenders.



The Department's adoption of the COMSTAT (Comparing Statistics) system assists precinct commanders by providing valuable information. COMSTAT is a modern day method of recognizing crime patterns. This data, which is evaluated by command staff personnel, identifies criminal problems affecting communities. Precinct commanders use this information in planning timely responses to crime problems and community concerns.



THE DIVISION OF SPECIAL OPERATIONS

The Division of Special Operations provides support units to enhance the Division of Patrol. It is composed of the Bureau of Patrol Support, the MetroLink Unit, the Office of Emergency Management, the Bureau of Security Services, the Office of the Chaplains and it coordinates the function of the Crisis Intervention Team. Within the Bureau of Patrol Support are the Tactical Operations Unit, the Metro Air Support Unit, the Highway Safety Unit and the Police Canine Unit.

St. Louis County
Office of
Emergency
Management



The Office of Emergency Management (OEM) is responsible for ensuring St. Louis County Government's ability to effectively respond to and recover from significant emergency events through planning, training and preparedness exercises. The OEM prepares St. Louis County Government to continue to deliver vital services to its residents while simultaneously rendering aid and assistance to disaster victims in our community. The Office provides coordination and support to the various units of the Police Department through pre-event planning for large community events and multi-agency exercises. Additionally, in compliance with the standards of the National Incident Management System (NIMS), the Office provides and facilitates training to all St. Louis County police officers and recruits in the management of major incidents through the construct of the nationally recognized Incident Command System (ICS).

The Office provides leadership in the metropolitan community through the Local Emergency Planning Committee (LEPC) for hazardous materials safety, the St. Louis Area Regional Response System (STARRS) for Department of Homeland Security grant funding administration and the Emergency Communications Commission (ECC) for regional communications interoperability.

The MetroLink Unit has been in existence since the opening of the MetroLink light rail system in 1993, when the Unit consisted of 12 officers. The Unit currently consists of a mixture of 41 commissioned personnel (21 from St. Louis County Police Department; 8 from the St. Louis Metropolitan Police Department; and 12 from the St. Clair County Sheriff's Office). A St. Louis County Police Department captain is responsible for the overall command of the MetroLink Police Unit. The current MetroLink system spans 46 miles of track with 26 Missouri platforms and 11 Illinois platforms. The MetroLink system had an estimated ridership of 18 million passengers in fiscal year 2012.



St. Louis County MetroLink Unit officers are responsible for handling criminal incidents on the trains and platforms in all Missouri jurisdictions serviced by the MetroLink system. Unit officers are responsible for conducting investigations into all criminal incidents that are not immediately taken over by detectives of the Division of Criminal Investigation.



The Tactical Operations Unit is responsible for special weapons and tactics, crowd and riot control and special circumstances such as hostage negotiations, high risk search warrants and handling barricaded subjects. The Tactical Operations Unit is also part of the region's hazardous material response team, equipped and trained to respond to weapons of mass destruction (WMD) attacks or assist in the "warm zone" of a hazardous material incident. Other duties include dignitary protection such as Presidential motorcades, coordinating large-scale ground searches, funeral escorts and honor guards at funerals and other special functions. Since 1975, the Unit has been assisting the precincts, where needed, in crime

deterrent activities and enforcement programs and maintains teams capable of providing dignitary protection. The Unit also assists the St. Louis County and Municipal Police Academy with advanced tactical training for officers throughout the Department. This training includes initial response to active shooter situations, training for school resource officers in conflict situations, less lethal training and other advanced firearms courses.

Sixteen police officers, two sergeants and a captain maintain a 24-hour readiness alert level to meet the tactical needs of our Department or any requesting agency.

In 2012, the Tactical Operations Unit took delivery of two grant funded vehicles: a Tactical Support vehicle (command and equipment truck) and a Lenco Bear-Cat Armored vehicle equipped with an elevated platform. The Tactical Support vehicle allows the Tactical Operations Unit to transport all of its gear with them at all times allowing the Unit the flexibility needed to meet any situation. It can carry the Unit's robots, tools, weapons, breathing apparatus, protective suits and can serve as a command post. The Bear-Cat Armored vehicle provides another armored vehicle to move officers into threat zones. A unique feature of the Bear-Cat is an elevated platform mounted to the roof that allows officers direct access to second story windows. The St. Louis County Police Department is the only agency in the Midwest with such a platform and the Department considers it a regional asset, available for use by other police agencies.



In 2012, the Tactical Operations Unit executed 122 high risk search warrants, an additional 1,340 calls for service assisting the Division of Patrol, conducted 5,087 self-initiated assignments and made 339 arrests.

DIVISION OF SPECIAL OPERATIONS

The Metro Air Support Unit continued to prove its effectiveness as a regional, cost effective partnership among the St. Louis County Police Department, the St. Louis Metropolitan Police Department and the St. Charles County Sheriff's Department. This partnership allowed the pilots in the helicopters to assist with 170 vehicle and 36 foot pursuits. Pilots also assisted in 136 searches for missing persons, all using technologies such as the Forward Looking Infrared (FLIR), night vision and moving map systems utilizing the latest technology. Having seven helicopters and one fixed wing aircraft at its disposal, the Unit flew nearly 2,345 hours during 2012. The latest helicopter, an MD500E Jet Turbine with AERO Computers and Nighsun Spotlight was purchased through grant funding and delivered at the end of November 2012.



Established in 2008, The Highway Safety Unit continued its efforts in the reduction of injury accidents on state highways throughout St. Louis County by aggressive enforcement initiatives. The Unit, partially supported through grant funding from the Missouri Division of Highway Safety, made 11,639 traffic stops in 2012, issuing over 9,000 citations. They also conducted 40 sobriety checkpoints and made 453 DWI arrests. The Unit also engages in public education and awareness with "Arrive Alive" presentations in county high schools, media appearances and announcements having made 82 public presentations throughout the year.

Consisting of six canine teams and a supervisor, the Police Canine Unit has provided coordinated canine services to the St. Louis County Police Department. The Unit utilizes specially trained dogs in narcotics detection, evidence recovery, lost/missing persons and criminal apprehension. Since March of 2005, the canine teams have proven themselves as a very effective tool in routine patrol functions and in fostering good will with school children. Furthermore, advances in training practices and the varied use of police canines have proven to the highest courts that an alert (the signal that the canine has found something) from a well-trained canine provides substantial probable cause in a variety of narcotics cases. The Unit responded to almost 3,000 calls for service, with an additional 1,475 self-initiated activities. The teams executed over 500 searches last year that led to almost 250



arrests. Because of the Police Canine Unit's advanced level of training, the canines are used on a need-specific basis during high-risk deployments with the Tactical Operations Unit. The canine teams that respond to these calls are true force multipliers by providing the tactical commanders a large array of advantages during operations. The canine teams can be deployed



independently within the area of operation where a manned force would be at extreme risk. Secondly, the option of having a canine as a tool for locating potential threats in an area not yet cleared allows the officers to remain within the best available cover. In October of 2012, the South County Police Business Association, comprised of local volunteers, donated K-9 trailers to the Department. The trailers will allow the Unit to transport more equipment and supplies for training and deployments.

The Bureau of Security Services is comprised of one lieutenant and two sergeants who supervise approximately fifty police and security officers, including one explosives detection canine and handler. The Bureau ensures a safe environment for employees and visitors within all of the St. Louis County buildings and grounds by providing the physical presence of uniformed security officers and police officers at posts and on patrol. The Bureau also monitors alarms, surveillance cameras and the access card system. The Bureau's officers respond to calls for service in and around County property, operate security checkpoints and perform escorts and patrols. The Bureau is also responsible for the master key system for all county facilities, equipment and vehicles.

The Crisis Intervention Team (CIT) program for the St. Louis County Police Department is managed through the CIT office in the Division of Special Operations. The purpose of Crisis Intervention Team training for police officers is to assist the officers in recognizing mental illness or distress and how to effectively and safely de-escalate the situation for all parties involved. The National Alliance on Mental Illness recognizes that mental illness comes in various forms, can be short in duration or affect the entire life of an individual and that one in four adults experience a mental health disorder in any given year. Because mental illness usually strikes during adolescence and young adulthood, the St. Louis County Police Department has been expanding its Youth CIT Program (established in 2010) to ensure that all school resource officers receive additional training. The CIT coordinator is a sergeant who is a member of the CIT Council and head of the training committee. Three forty-hour training sessions and five eight-hour continuing education sessions are coordinated by the Unit supervisor each year.



The Office of the Chaplains is overseen by the Commanding Officer, Division of Special Operations. The chaplains lend needed support to all officers and civilian employees, including their families, when necessary. The Chaplain program has always been recognized as one of the finest in the area.

THE DIVISION OF CRIMINAL INVESTIGATION

The Division of Criminal Investigation is charged with the responsibility of assigning manpower and resources to those investigations that require in-depth critical investigative review.



Over the past several years, the St. Louis County Police Department's Bureau of Drug Enforcement has evolved into one of the largest locally controlled multi-jurisdictional drug task forces in the Midwest. The Bureau consists of several specialized units that include the Street Enforcement Team, the Interdiction Unit, two Long-Term Investigations Units and detectives specializing in the investigation and removal of methamphetamine laboratories. The Bureau of Drug Enforcement has commissioned and civilian personnel assigned full time to the federal Drug Enforcement Administration (DEA) and the U.S. Department of Housing and Urban Development (HUD). Additionally, all members of the drug task force work closely with other federal agencies, including the Bureau of Alcohol, Tobacco, Firearms and Explosives (ATFE) and Immigration and Customs Enforcement (ICE). The Bureau has a long history of cooperating with municipal police departments in the area in a coordinated approach to address drug trafficking in our community at all levels. Currently, the drug task force is comprised of full-time detectives from the cities of Ballwin, Bellefontaine Neighbors, Chesterfield, Ferguson, Manchester, St. Charles City, Webster Groves and Woodson Terrace.

During the past year, the St. Louis County Police Department, along with various community organizations and schools, have held nearly two dozen town hall style meetings to raise awareness of the heroin epidemic in the region. Although it has been around for more than 100 years, its potency, cost and intake method has evolved from injection only to both smoking and snorting. In 2011, the National Council on Alcoholism & Drug Abuse in St. Louis experienced a dramatic increase in heroin-related calls. However, as a result of the educational campaigns in 2012, St. Louis County is the only county in the region to see a decrease in heroin deaths and overdoses. Due to their success, the St. Louis County Police Department's Multi-Jurisdictional Drug Task Force was recognized in 2012 with the "Outstanding Community Prevention Effort Award" in Washington, D.C.



DIVISION OF CRIMINAL INVESTIGATION

The Bureau of Crimes Against Property investigates property related crimes that have been referred by the police officers in other divisions or police departments for further investigation. The Bureau is comprised of the Bomb and Arson Unit, the General Assignment Unit, the Auto Crime Unit and the Burglary Unit.



The Bomb and Arson Unit is responsible for the initial response and investigation of all suspected explosive devices and suspicious fires. Members of the Unit are specially trained and certified as bomb technicians and fire investigators. They are an accredited bomb squad,

which is administered and regulated by the Federal Bureau of Investigation, the United States Army and the Department of Homeland Security. Specialized equipment, such as remote robot platforms, fully equipped emergency response trucks and professionally trained canines are used by the Unit to perform their job more effectively and safely.

The General Assignment Unit provides investigative support for the Division of Patrol on a wide variety of cases, ranging from felony stealing offenses to white-collar crimes. The Unit has trained computer forensic examiners assigned to the St. Louis County Police Computer Lab and to the Regional Computer Crime Education and Enforcement Group of St. Louis. The caseload of these examiners continues to grow exponentially. The Financial Fraud side of the Unit has an investigator assigned to the U.S. Postal Inspector's Identity Theft Task Force to focus on organized groups and individuals who use identity theft on a large scale inside and outside the borders of Missouri. This group has shown excellent results with major investigations resulting in numerous federal indictments.



Through the use of specially equipped bait vehicles, the Auto Crime Unit targets high theft areas throughout unincorporated and contract municipalities with a focus on arresting car thieves and presenting cases to the Prosecuting Attorney's Office for criminal prosecution. This initiative has also demonstrated a deterrent effect as evidenced by the number of auto thefts being reduced significantly since the adoption of the Bait Car program. The Auto Crime Unit is also responsible for assisting federal and local law enforcement in the investigation of thefts and other crimes relating to motor vehicles in the automotive industry. The Auto Crime Unit continually works to promote awareness and prevention of motor vehicle thefts through presentations at Citizens Police Academies and other crime prevention programs. The Unit uses several proactive, technology-assisted tools such as the Bait Car program to disrupt thieves while working with multiple police agencies in the region to combat the regional issue.

DIVISION OF CRIMINAL INVESTIGATION

The Burglary Unit detectives investigate residential and business burglaries in the areas of St. Louis County patrolled by the St. Louis County Police Department.



The Bureau of Crimes Against Persons investigates incidents where people are assaulted, injured, or killed that have been referred by the police officers in other divisions or police departments for further investigation. The Bureau is comprised of two Homicide-Robbery-Sexual Assault squads, the Domestic Violence Unit, the Special Investigations Unit, the Child Abuse Unit and the Cold Case Unit.

The two Homicide-Robbery-Sexual Assault squads investigate incidents in the St. Louis County Police Department's patrol areas and in the municipalities within St. Louis County at the request of those agencies or the Prosecuting Attorney's Office. Many municipalities within St. Louis County rely on the professionalism and experience that these detectives bring to a crime scene. The squads also investigate any death that appears to be suspicious in nature, or can't quickly be explained as natural causes.

The Domestic Violence Unit is funded by two separate grants through the State of Missouri for the purpose of investigating and successfully prosecuting domestic violence offenders. Since 2003, two members of the not-for-profit **Legal Advocates for Abused Women (LAAW)** Office work directly with the Unit to provide support, crisis intervention and referrals for the victims of domestic violence.

The Child Abuse Unit investigates crimes committed by a suspect who is a family member or has care, custody, or control of a victim who is sixteen years of age or younger. The Unit investigates both sexual abuse and physical abuse involving serious physical injuries. The Unit works closely with the Missouri Department of Social Services-Children's Division, the St. Louis County Family Court, the Children's Advocacy Services of Greater St. Louis and the St. Louis County Prosecuting Attorney's Office as a multi-disciplinary team. The Unit investigated 219 cases of child abuse in 2012.

The Special Investigations Unit has the responsibility of investigating liquor law violations, gambling violations, prostitution offenses, pawn shop licensing and crimes related to the possession, distribution and manufacturing of child pornography. The detectives within the Special Investigations Unit are routinely recognized for their efforts in combating child pornography. For the past several years, the Unit accounted for 40 percent of the child pornography arrests in the State of Missouri.

Due to the numerous technological advances made in the science of DNA profiling, the Cold Case Unit was formed in 2005 with funding assistance from the Department of Justice. The Unit is designed to investigate homicides and sexual assaults where DNA is involved. The Unit began reviewing cases from as early as 1957. Due to the diligence of this Unit, several families and victims have been given closure and numerous suspects have been brought to justice.

DIVISION OF CRIMINAL INVESTIGATION

The Bureau of Criminal Identification is comprised of the Police Crime Laboratory, the Fugitive Affairs Unit, the Crime Scene and Prisoner Conveyance Units, the Property Control Unit and the Fingerprint Unit.

The Police Crime Laboratory began in 1966 with one full-time police officer and one part-time chemist offering a variety of forensic services from alcohol and narcotics testing to blood-typing and fingerprints. Today, the Police Crime Laboratory provides the highest quality forensic services in specialized disciplines using sophisticated instrumentation. Teams of forensic scientists, firearms examiners and photo technicians analyze physical evidence in support of detectives, investigators and the Prosecuting Attorney. The forensic scientists, examiners and technicians are frequently called to provide expert witness testimony in criminal trials in federal, state and municipal courts. The Police Crime Laboratory achieved accreditation through American Society of Crime Laboratory Directors (ASCLD/LAB) in 2005 and has been reaccredited through July of 2015.



The *Chemistry Section* of the Police Crime Laboratory provides analysis for criminal investigations involving drugs (controlled substance analysis), arson (fire debris analysis), DUI/DWI (blood alcohol determination) and liquor analysis. Completing more than 5,000 cases annually, the Chemistry Section is also a HIDTA (High Intensity Drug Trafficking Area) funded laboratory for the Eastern District of Missouri. This funding provides expanded support for cases involving the production of methamphetamine.

The St. Louis County Police Crime Laboratory has a *Biology/DNA Section* for the identification of forensic stains and development of a DNA profile for identification. The Biology/DNA Section has access to the Combined DNA Index System (CODIS), which is a database managed by the Federal Bureau of Investigation. The Biology/DNA Section received 160 CODIS hits in 2012 providing investigative leads to many unsolved cases, including homicides and sexual assaults. The current sensitivity level of DNA and use of the database has allowed cases from as far back as the 1970's to be solved and to provide closure for the victims and their families.

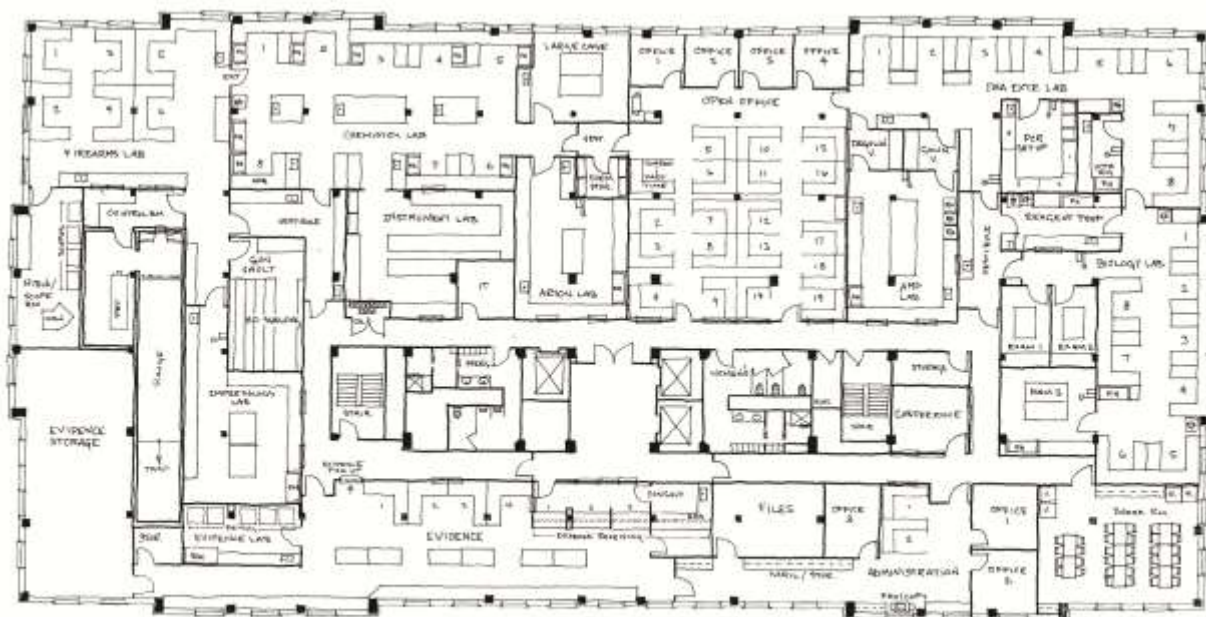
DIVISION OF CRIMINAL INVESTIGATION

The *Firearm and Tool Mark Section* has four detectives analyzing firearms and ammunition submitted to the laboratory. Examination processes include identifying firearms, test-firing weapons, examining bullets and cartridge cases and comparing the results against evidence from other crime scenes. Over the last two years, the Firearm and Tool Mark section has made almost 80 hits linking firearm-related investigations across the region, using the National Integrated Ballistics Information Network/Integrated Ballistics Identification System (NIBIN/IBIS).



The *Photographic Services Section* is responsible for the printing, processing and storage of digital images and historical photographs. Responsibilities include photographing evidence and public relations events. Photo technicians are skilled in the handling of digital media and traditional photo processes. As technology evolves, the Photographic Services Section is challenged to remain current with the available processes.

The Police Crime Laboratory worked with the Fingerprint and Crime Scene Units to complete the design process for a new laboratory to be located in Police Headquarters. The construction of this state-of-the-art facility began in 2012 and is slated to open in 2013. The new lab will create an opportunity to add more scientists to address the increased needs of law enforcement and it will provide needed space in which to work. These improvements will enable the Department to better serve the entire law enforcement community.



Early Draft of New Crime Lab Design

The Fingerprint Unit is responsible for examining latent fingerprint evidence submitted by officers of the St. Louis County Police Department and various municipal law enforcement agencies throughout St. Louis County. It is also responsible for positively identifying suspects who are brought into the St. Louis County Justice Center for processing. The County Police Fingerprint Unit was an area leader in the adoption of the Automated Fingerprint Identification System (AFIS). The local system was joined with the State of Missouri system and eventually the national system, allowing the successful identification of thousands of suspects.

In 2012, the Fingerprint Unit experienced a thirty-three percent increase in fingerprint searches and a twenty-six percent increase in matches over 2011 statistics.



The Fugitive Affairs Unit is located on the first floor of the Justice Center facility. The Unit is the liaison between the courts, area police departments and the jail. The Unit provides services related to the handling of arrest warrants and the conveyance of arrested individuals from in-state and out-of-state law enforcement agencies. During the past five years, the Unit processed nearly 60,000 St. Louis County warrants and 5,000 municipal warrants. The arrest warrants resulted in 335 in-state fugitive transports and 438 out-state fugitive transports. The Unit handled over 2,000 walk-in arrests and located over 80 fugitives.

The Property Control Unit houses evidence and property for the St. Louis County Police Department and various other local municipal police departments. In 2012, the Property Control Unit received close to 20,000 pieces of evidence. The evidence will be retained until it is adjudicated or until its retention is no longer required by law.



DIVISION OF CRIMINAL INVESTIGATION



The Crime Scene Unit is responsible for the initial processing of crime scenes. This includes the collection of evidence such as trace evidence to examine for DNA, blood, hair and material fibers. Additional aspects of their investigation include photographing, videotaping and searching for fingerprint evidence. The Unit assists area municipal departments and the Greater St. Louis Area Major Case Squad

upon request. Several members of the Unit are instructors at the St. Louis County and Municipal Police Academy where they present an extensive crime scene processing class. In order to stay current on evidentiary issues, all members of the Crime Scene Unit attend advanced training sponsored by local and federal agencies. Two Crime Scene detectives have been recently trained in handling hazardous materials and are members of the St. Louis Area Hazardous Materials (HAZMAT) Team. They can be assigned to cases involving the release of chemical agents and possible weapons of mass destruction.

The Prisoner Conveyance Unit is located within the Crime Scene Unit. Its mission is to assist with the transportation of prisoners from precinct stations and municipal police departments to the Justice Services Intake Center. In addition to transporting the prisoners, the officers assist in the booking process and the execution of arrest warrants. There are ten officers assigned to this Unit. Despite a series of injuries to staff members the Unit was still able to transport over fifteen thousand prisoners in 2012.



THE DIVISION OF OPERATIONAL SUPPORT

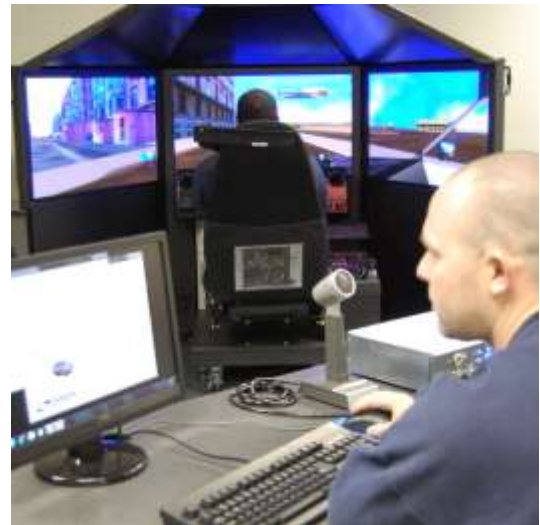
The Division of Operational Support provides the administrative foundation, professional standards and technological innovations necessary to remain a leader in professional public services. There are several bureaus within the Division of Operational Support with each supplying unique yet inter-dependant services.

The St. Louis County and Municipal Police Academy's (CMPA) primary mission is to provide quality law enforcement training programs. Its commitment to citizens and the community is to develop the skills necessary for an individual to grow and progress as an officer and to meet the challenges in today's society.



The St. Louis County and Municipal Police Academy is one of the premier law enforcement training academies in the country; one of only twenty-seven in the U.S. that maintain Public Safety Training Academy Accreditation through the Commission on Accreditation for Law Enforcement Agencies (CALEA) and one of only two in the State of Missouri. Its mission is to provide the finest training for all current police personnel and new police recruits for all of the police agencies in St. Louis County. The goal is ensure that our citizens and communities are served by the most professional and effective officers possible.

As required by the continuing process of evaluation and accreditation by CALEA, first in 2008 and again in 2011, the Academy provides state-of-the-art training in a wide variety of Missouri Peace Officer Standards & Training (POST) certified continuing education classes. In addition, the CMPA provides 916 hours of basic recruit training—far more than the POST-required 600 hours for licensure—using standard classroom training as a preamble to hours of hands-on training in realistic role-play sessions and in comprehensive defensive tactics, physical, driving and firearms training. The latter two are enhanced by the latest in use of force and emergency driving simulators.



DIVISION OF OPERATIONAL SUPPORT

Accountability is strengthened by a prudent review of daily conduct. The Bureau of Professional Standards was established to investigate complaints of misconduct, review the force used by officers while in the performance of their duties and review all traffic accidents involving Department vehicles. The Bureau is also responsible for conducting thorough background investigations of all police applicants. Each applicant must adhere to stringent requirements to

maintain the Department's professional reputation. The Department also continually monitors employee professionalism utilizing a guidance program to identify employees who may exhibit a pattern of behavior inconsistent with the established policies and procedures.



Allegations of policy or ethics violations, whether made by a member of the public or internally, are investigated thoroughly and without bias. The Board of Police Commissioners, comprised of regular

citizens appointed by the County Executive, reviews each citizen complaint and provides the function of the Citizen Review Board found in many departments. The Board plays an active role in the recommended disposition and meets frequently with members of the department's administration during a review. Regularly scheduled public meetings offer our citizens a direct voice to the leadership of the Department.

In 2012, the Bureau of Professional Standards implemented a new internal database for tracking statistics. This database is designed to provide useful and relevant reports on trends and patterns among officers and employees of the Department. It will also allow for paperless reporting from Department supervisors for certain types of reports to the Bureau in a faster and more efficient manner. This will allow the Bureau to begin investigating the complaint or circumstances of the case faster.

The Bureau of Communications is responsible for answering and evaluating incoming phone calls to determine the level of service needed and the dispatching of police officers or other

services to provide an appropriate response. In 2012, the Bureau answered almost 800,000 incoming telephone calls requesting emergency 911 services or other items of information. The Bureau of Communications serves as a 24-hour per day lifeline for police officers, providing relevant information, access to additional resources and constant inter-agency communication.





Much like the CMPA and the St. Louis County Police Department as a whole, the Bureau of Communications is independently accredited through CALEA (Commission on Accreditation for Law Enforcement Agencies). As the State's only CALEA accredited communications center and one of only 65 in the United States, the Bureau of Communications is in a class of its own.

In 2012 the Bureau of Communications was restructured by adding a Police Communications Deputy Director who serves as an administrator under the direction of the commander. This position is vital as the St. Louis County Police Department transitions to a new 800 MHz trunked radio system which will ensure interoperable communications among Law Enforcement, Fire, Public Works and numerous other governmental agencies in St. Louis County and surrounding agencies.

September 11, 2001 brought to the forefront one of the challenges emergency responders have battled for years: the ability to



communicate directly with each other in a timely fashion. The St. Louis County Emergency Communications Commission (ECC), the Bureau of Communications and the Office of Emergency Management are building a new emergency communications center and establishing an 800 Mhz trunked radio system to ensure full interoperability among firefighters, EMS, police, hospitals, public works and other groups to better manage incidents by sharing vital information quickly. The facility has a target date of December 2013 for final completion and staffing.

Among many support systems provided by the Bureau of Computer Services is the award-winning Computer Assisted Report Entry (CARE) system. This report entry system was developed by the St. Louis County Police Department and has evolved into a highly complex computer-based records management system. For 28 years, officers have used CARE to quickly dictate their reports by phone and return to service. While in a mobile environment, CARE has reduced officers' report writing time, from an average of 23 minutes to only nine minutes. This efficiency allows for more effective use of time for investigations, patrol, or other problems that affect the quality of life in neighborhoods. It also allows the Department to collect data for crime analysis that is used for the efficient redeployment of officers based on emerging crime trends or patterns.

Report formats are standardized, legible and meet both summary based (UCR) and incident based (NIBRS/MIBRS) reporting guidelines. With this new format, concise records management and detailed crime analysis reports are just seconds away. Officers can access electronic mug shots and gun permit issuance records, along with sex offender and domestic violence databases. Most importantly, CARE is shared technology with multiple agencies in the region using the interface and making it easier to share information.

DIVISION OF OPERATIONAL SUPPORT

The Bureau of Central Police Records is the central repository for the collection, maintenance and archiving of police reports and official documentation. The Bureau is responsible for providing the public with criminal history checks for employment, releasing open public records, managing the sex offender registration program and managing the daily operations of the CARE system. Additionally, the Bureau's Private Security Section provides training and licensing for professional security officers and administers the Missouri Conceal Carry application process for all of St. Louis County. In 2012, the St. Louis Metropolitan Police Department's and the St. Louis County Police Department's Private Security Licensing Sections merged into one group within the St. Louis County Police Department's Headquarters building. The purpose of the merging is to create a one-stop application point for officers seeking licensing in both St. Louis City and St. Louis County.



Also located within the Bureau of Central Police Records is the Sex Offender Registration and Enforcement Unit (SORE). This Unit is responsible for tracking the registered sex offenders within St. Louis County. Registered offenders are required to appear in person, at least twice a year, for an interview with the enforcement detectives. There are currently 1,211 registered sex offenders residing in St. Louis County, with five offenders in violation of their registration. The SORE Unit has been awarded a grant, which will provide our Department a self-service KIOSK, allowing offenders to register and update their file by use of their thumb print. The offender's updated photo and documentation will then be transmitted instantaneously to the Missouri State Highway Patrol.

The Bureau of Staff Services contains the Units of: Personnel Services, Planning and Analysis, Fiscal Services, Vehicle and Supply and Office Services.

The Personnel Services Unit serves as the human resources portion of the St. Louis County Police Department. The Unit's motto is, "The Best Place for the Best People to Work." They ensure the best candidates for employment are recruited, interviewed, tested and selected. The Personnel Services Unit actively recruits qualified personnel from universities, job fairs and community-oriented events and programs throughout the Midwest. It also coordinates an intern program for soon to be college graduates to gain a better understanding of the numerous facets of law enforcement.

Our Department appreciates our employees and respects the citizens we serve. We also believe that the members of the St. Louis County Police family represent our community. For these reasons, we seek to attract citizens from every community, other law enforcement agencies, professions and disciplines for all positions on our Department. We value the contributions of the men and women who have served in America's military. Everyone is equally welcome and encouraged to apply.



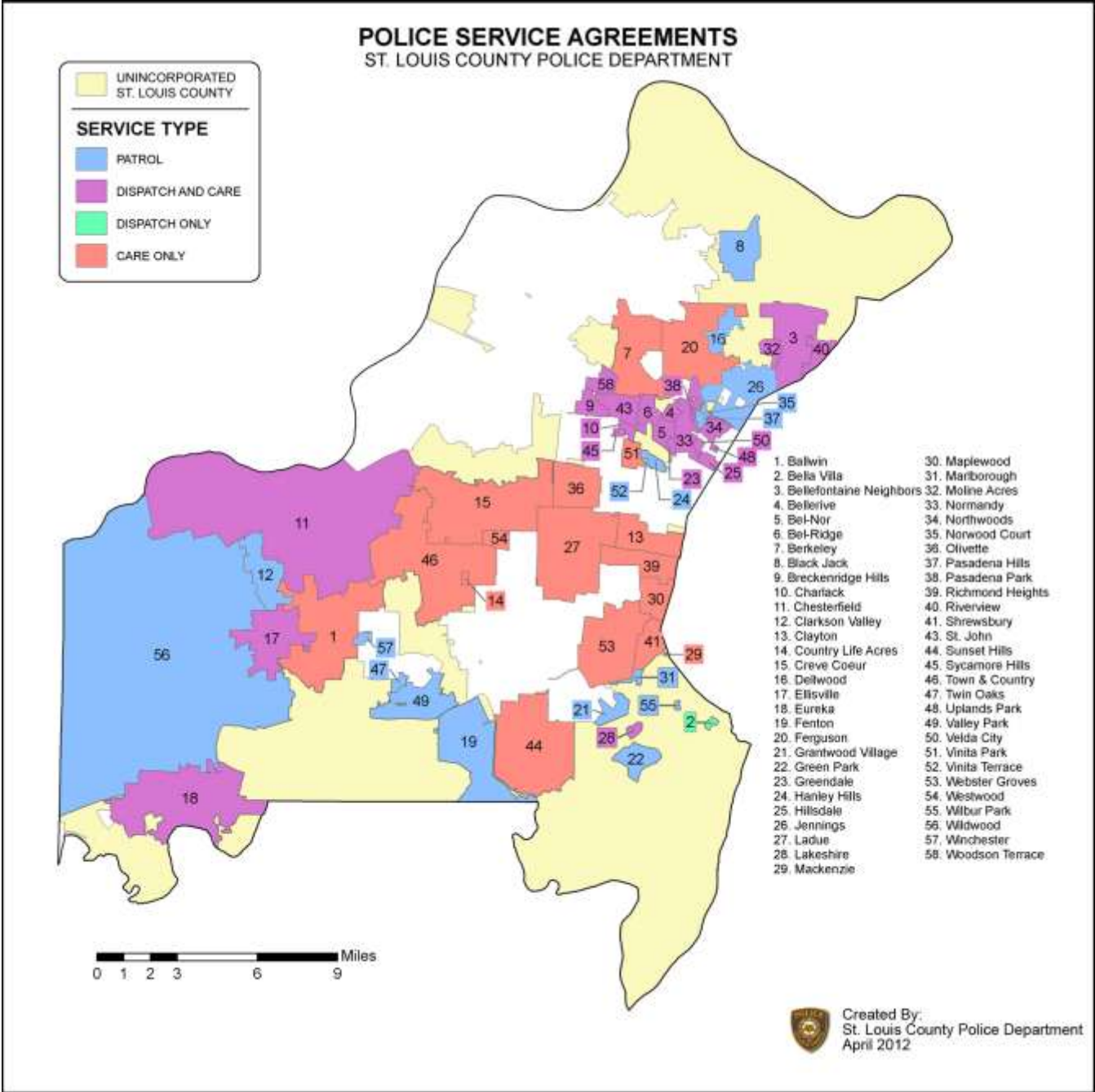
The Planning and Analysis Unit helps to ensure and maintain the highest level of professionalism by coordinating the written directive system of policies and procedures, monitoring grant compliance, collecting and reviewing various forms of Department statistics and maintaining the police Department's international accreditation. In 1998, the St. Louis County Police Department received its first Certificate of Accreditation from the Commission on Accreditation for Law Enforcement Agencies (CALEA). Accreditation recognizes the professionalism and effectiveness achieved by the St. Louis County Police Department in complying with every standard that applies to our agency. The Department's accreditation has been renewed every three years since its first award.

The Fiscal Services Unit maintains the Department's budget and payroll functions. The Vehicle and Supply Unit is responsible for all aspects of the Department's automotive fleet, including the acquisition, outfitting, repair and fueling of vehicles. As the purchasing entity, they are tasked with the procurement of equipment, materials, uniforms and services necessary for all Departmental functions. They also coordinate the use of travel, maintain current asset/inventory records, monitor public towing and establish contracts and lease agreements. The Unit provides an on-hand stock of forms, citations, police uniforms and a variety of related equipment and supplies.



The Office Services Unit provides document processing, transcription and data entry services to most elements of the Department, in addition to intra-departmental mail services.

POLICE SERVICE AGREEMENTS



The St. Louis County Police Department is the largest provider of contracted law enforcement services in the State of Missouri – contracting with 63 municipalities, eleven school districts, MetroLink and several other agencies (federal or regional task forces) for a variety of services. To cover the costs of these contracts, approximately \$19 million is deposited annually into St. Louis County Government's General Fund as contract revenue. Within the St. Louis County Police Department there are over 200 police officers and civilians whose positions are funded entirely through city municipal, MetroLink, or school district contract service agreements.

PATROL CONTRACTS

The following municipalities and agencies have either full-service contracts or a dedicated patrol contract with the St. Louis County Police Department. A full-service contract establishes the St. Louis County Police Department as the sole police agency for the municipality providing all police services 24 hours a day, 7 days a week. A dedicated patrol contract requires the St. Louis County Police Department to provide all requested and/or necessary police services 24 hours a day with a specified number of proactive patrols each shift. In addition to the contracted number of patrol hours, all support and specialized resources are part of the contracted agreement.

<u>Municipality / Agency</u>	<u>Number of Full-Time Officers Assigned</u>
Black Jack	8
Clarkson Valley	5
Dellwood	14
Fenton	26
Grantwood Village	1
Green Park	1
Hanley Hills	5
Jennings	33
Marlborough	5
MetroLink	22
Missouri Department of Conservation	1
Norwood Court	2*
Pasadena Hills	1*
Twin Oaks	1
Valley Park	14
Vinita Terrace	1
Wilbur Park	0
Wildwood	34
Winchester	2

* At times, Norwood Court and Pasadena Hills share an officer as decided by contract.

POLICE SERVICE AGREEMENTS

SCHOOL RESOURCE CONTRACTS

The following school districts have contracts with the St. Louis County Police Department to provide school resource officers (SRO's) while school is in session. Several of the schools have elected to expand their contract to include SRO's during their summer school activities.

<u>School District/School</u>	<u>Number of Full-Time Officers Assigned</u>
Afton	2
Bayless	2
Hancock	1
Hazelwood	8
Lindbergh	2
Mehlville (& SCOPE)	7
North County Technical School	1
Parkway	5
Riverview	3
Rockwood	8
Valley Park	1

SPECIALIZED ASSIGNMENTS

The following agencies have contracts or memorandums of understanding that describe the details of our officers' functions with these agencies. The following is a table of agencies/departments and the number of officers assigned.

<u>Agency/Department</u>	<u>Purpose</u>	<u>Number Assigned</u>
DEA	Drug Task Force Crime Analysts and Clerk	8
FBI	Joint Terrorism Task Force Violent Crime Squad Anti-Gang Unit STL Metropolitan Fugitive Task Force Operation Safe Street Task Force	1 1 1
TEW	Terrorism Early Warning Group	2
RCCEEG	Regional Computer Crimes Education and Enforcement Group	1
Social Security	Cooperative Disability Investigation Unit	3
Housing Authority	Uniform Patrol	1

COMMUNICATIONS CONTRACTS

The following municipalities have full-service communications contracts with the St. Louis County Police Department for their residents and any municipality for which they provide police services.

Bella Villa	Hillsdale
Bellefontaine Neighbors	Lakeshire
Bel-Nor	Moline Acres
Bel-Ridge	Normandy (Bellerive Acres, Greendale, Pasadena Park)
Beverly Hills (Glen Echo Park, Velda Village Hills)	Northwoods
Breckenridge Hills	Riverview
Charlack	St. John (Sycamore Hills)
Chesterfield	Velda City (Uplands Park)
Ellisville	Woodson Terrace
Eureka	

The following municipalities and institutions have contracts with the St. Louis County Police Department for full-service Computer Assisted Report Entry (CARE) or use of the CARE system for self-entering of police reports. The Records Analysis Mapping System (RAMS) is included in each of the contracts.

Ballwin	Moline Acres
Bella Villa	Normandy (Bellerive Acres, Greendale, Pasadena Park)
Bellefontaine Neighbors	Northwoods
Bel-Nor	Olivette
Bel-Ridge	Pagedale
Berkeley	Richmond Heights
Beverly Hills	Riverview
Charlack	Rock Hill
Chesterfield	Shrewsbury (Village of Mackenzie)
Clayton	St. John (Sycamore Hills)
Creve Coeur	St. Louis County Parks
Ellisville	Sunset Hills
Eureka	Town & Country (Country Life Acres)
Ferguson*	UMSL
Hillsdale	Velda City (Uplands Park)
Lakeshire	Vinita Park
Lambert International Airport	Webster Groves
Maplewood	Woodson Terrace

*Ferguson = read only as of 8/1/2012

2012 AWARD RECIPIENTS

Distinguished Service Citation

The Distinguished Service Citation for Valor may be awarded by the Board of Police Commissioners to a Department employee who performs an act of heroism in the face of personal injury or risk of life.

Police Officer Deborah Bradley
Police Officer Ryan Brusca

Police Officer James Peterson
Police Officer Gary Robertson

Police Officer Fareid Yaakub

Meritorious Service Citation

The Meritorious Service Citation may be awarded by the Board of Police Commissioners to a Department employee who performs an extremely laudable or extraordinary act.

Police Officer Kevin Minor

Lifesaving Award

The Lifesaving Award may be awarded by the Chief of Police to a Department employee who performs a lifesaving measure where valor circumstances do not exist and the victim has survived.

Lieutenant John Wheeler
Sergeant Margaret Trittler
Police Officer Timothy Anderer
Police Officer Stephen Benko
Police Officer James Ellis
Police Officer Alexander Fisher

Police Officer Jody Franey
Police Officer Loren Godsil
Police Officer Justin Jones
Police Officer Matthew King
Police Officer Travis Knoop
Police Officer Terence McCoy

Police Officer Kevin Reckert
Police Officer Vince Wood
Police Officer Michael Wood
Reserve Officer John Mullen

Citizen Service Citation

The Citizen Service Citation may be awarded to a citizen whose assistance to the Police Department was given without regard to personal welfare and had a positive bearing on the outcome of an incident, contributing to the furtherance of law enforcement in the community.

Mr. Frederick Bach
Mr. Ronald Feger
Ms. Jackie Jones
Mr. Sanel Keranovic

Ms. Mary Lane
Mr. Damon McGhee
Ms. Laetitia Mullen
Ms. Kristine Novotny

Mr. Hans Oesterle
Mr. Anthony Schmaltz
Mr. Timothy Silver
Security Officer Timothy Lipham



Chief's Commendation

The Chief's Commendation may be awarded by the Chief of Police to a Department employee or work element that performs a particularly noteworthy act or service based on determined and intelligent performance.

Neighborhood Enforcement Team

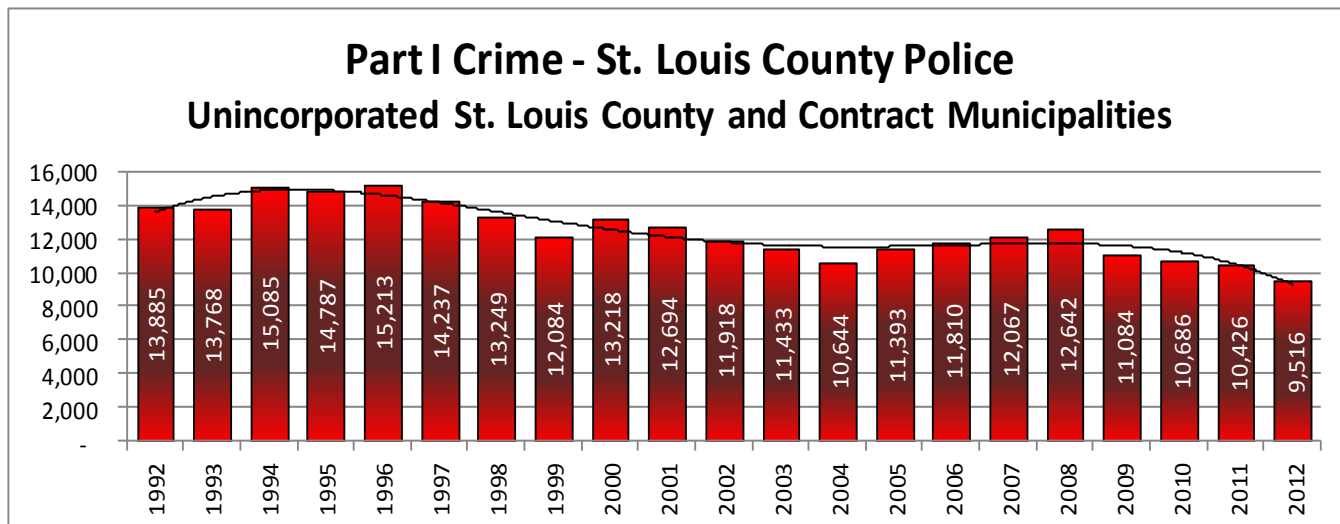
Captain Jon Belmar
 Captain Kenneth Williams
 Lieutenant Norman Mann
 Sergeant Craig Jeffery
 Sergeant Jerry Kelly
 Sergeant David Kopfensteiner
 Sergeant Jeremy Romo
 Sergeant Dave Ryan
 Sergeant James Schrand
 Sergeant James Stoehner
 Police Officer Jarret Abelov
 Police Officer Philip Accardi
 Police Officer Justin Adams
 Police Officer James Borzillo
 Police Officer Chris Braymiller
 Police Officer Nikki-Qui Brown
 Police Officer Ryan Brusca
 Police Officer Mathew Burns
 Police Officer Matthew Callahan (2)
 Police Officer Matthew Caravella
 Police Officer Jordan Carey
 Police Officer Robert Dean
 Police Officer Matt Delhoughne
 Deputy David Devillez (St. Charles County Sheriff's Dept)
 Police Officer Danielle Durham
 Police Officer Derrick Fort
 Police Officer Michael Fumagalli
 Police Officer Michael Gilyon
 Police Officer Benjamin Granda
 Police Officer Steven Grelle
 Detective Mark Grobelny
 Police Officer John Hallquist
 Police Officer Andrew Hammel
 Police Officer Dario Hayes

Police Officer Haywood Henderson
 Police Officer Jerod Henderson
 Police Officer Craig Higginbotham
 Police Officer Bradley Hollenback
 Police Officer Joseph Hollocher (2)
 Police Officer Zach Hopkins (Columbia, Illinois PD)
 Police Officer Sherman Jackson
 Police Officer Kyle Jundt
 Police Officer Thomas Keener
 Police Officer Kathy Kelly
 Police Officer Robert Kircher
 Police Officer Paul Koenig
 Police Officer John Krebs
 Police Officer Adam Lane (2)
 Police Officer Scott Leible
 Police Officer Matthew Levy
 Police Officer Derek Machens (2)
 Police Officer Chris Mathis
 Police Officer William Matthews
 Police Officer Sean Murphy
 Detective Paul Neske
 Police Officer Thomas Noonan
 Police Officer Joseph Patterson (2)
 Police Officer Gary Robertson
 Police Officer Scott Ruder
 Police Officer Ryan Schieler
 Police Officer Kenneth Skala
 Police Officer Andrew Soll
 Police Officer Kevin Trott
 Police Officer Trevor Voss
 Police Officer Robert Wallace
 Police Officer Jason Whiteside
 Ms. Becky Murphy
 Police Report Clerk Joseph Stobie

CRIME

Crimes across the United States are broken down into two categories. The U.S. Department of Justice defines Part I crimes as murder, rape, robbery, aggravated assault, burglary, larceny, motor vehicle theft and arson. Part II crimes are all other offenses such as vandalism, alcohol violations, drug violations, loitering, etc.

There were a total of 9,516 Part I crimes in 2012 in the Unincorporated and contract municipality areas of St. Louis County. These 9,516 crimes represent an 8.7 percent decrease from 2011, a twenty-five percent decrease over the 12,642 crimes in 2008.



PART I CRIME STATISTICS Unincorporated and Contracted Areas* 2011 - 2012 Comparison

	Jan-Dec 2011	Jan-Dec 2012	% Change 2011-2012
Murder	17	8	- 52.9%
Rape	63	50	- 20.6%
Robbery	284	250	- 12.0%
Aggravated Assault	679	695	+ 2.4%
Burglary	2,318	1,828	- 21.1%
Larceny	6,387	5,929	- 7.2%
Motor Vehicle Theft	624	707	+ 13.3%
Arson	55	49	- 10.9%
Total	10,427	9,516	- 8.7%

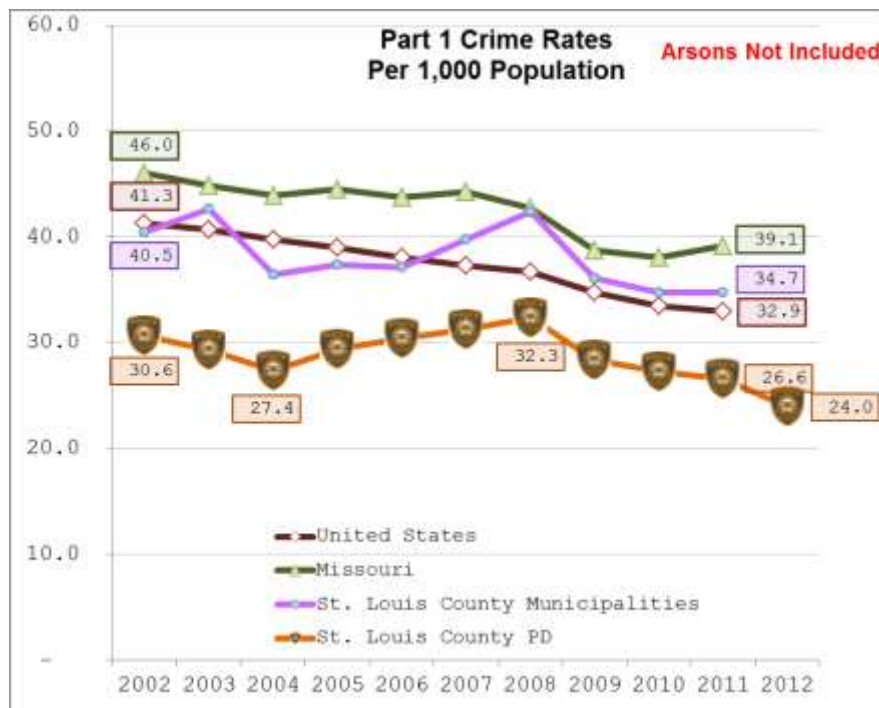
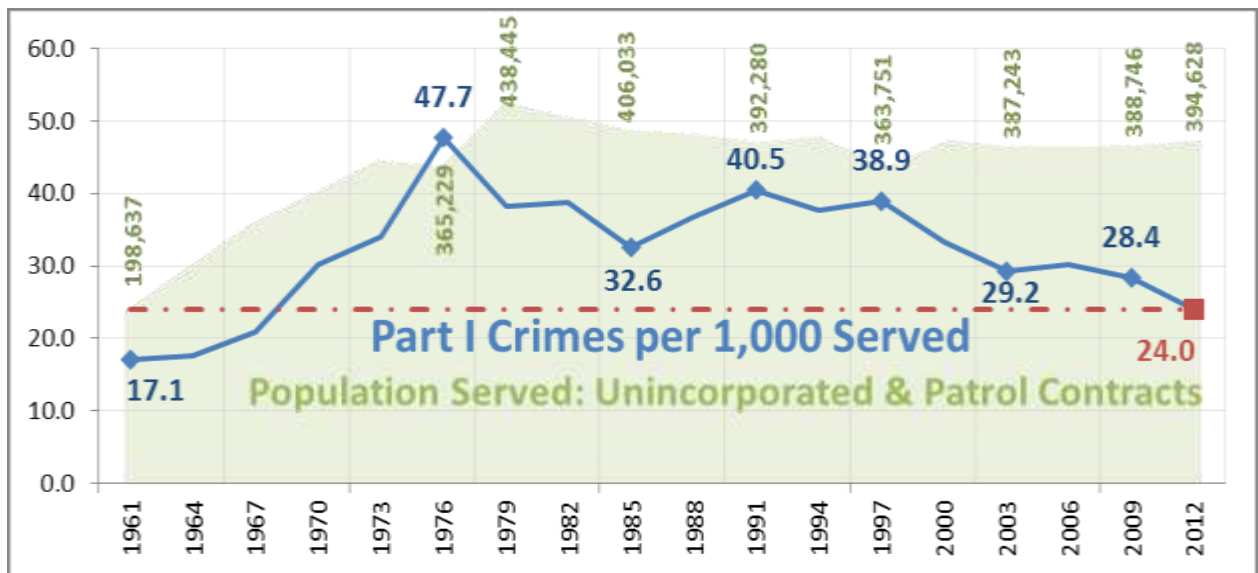
*Statistics do not include the City of Jennings Detail. Part I crime in Jennings was reduced by 15 percent, from 1,235 Part I crimes in 2011 to 1,054 crimes in 2012. The reduction has been attributed to a continued aggressive enforcement in areas determined to be "hot spots". Officers are assigned to patrol areas identified through computerized data, citizen feedback, confidential sources and intelligence developed by officers.

Additionally, lines of communication with citizens were expanded providing them with education and information as to the activities of the police Department. Utilizing the zero tolerance approach to crime and opening lines of communication with the citizens has had an impact on crime reduction and citizen cooperation has turned out to be very positive.

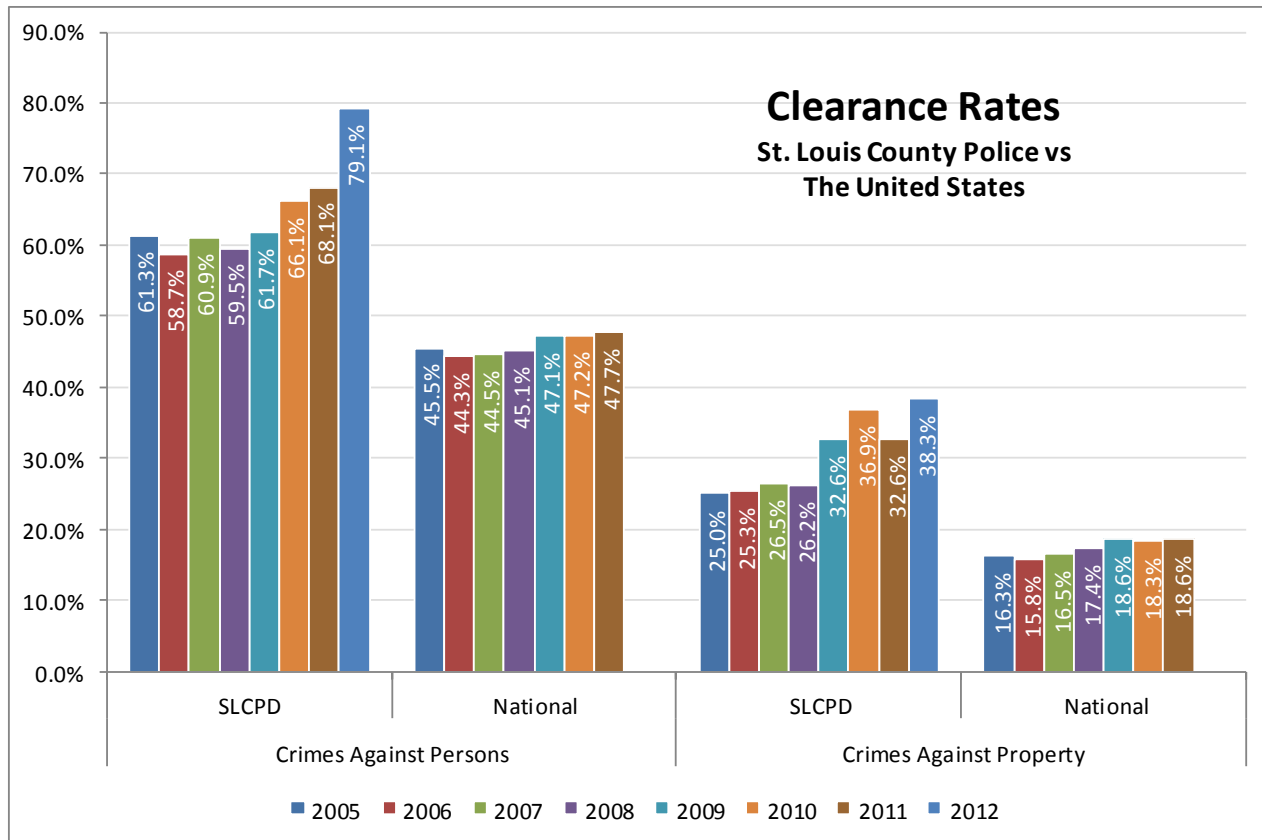
The area served by the St. Louis County Police Department maintains a lower "crime rate" than the national, state and local municipal police department crime rates. The "crime rate" is simply the number of crimes divided by the total population served and, in this case, is reflected as the number of crimes per one thousand persons.

In 2012 there were 24.0 Part I crimes reported to the St. Louis County Police Department for every one thousand citizens served. The crime rate is based upon the Department's service population (unincorporated St. Louis County and municipalities that contract with the St. Louis County Police Department for patrol services; see page 29). Below is a chart depicting the Part I crime rate against the actual service population within St. Louis County.

When comparing crime rates outside of the Department, the category of Arson is generally excluded because of inconsistencies in the way it's tracked from agency to agency.



Because data from other agencies isn't yet available for 2012, comparisons are for 2011. The St. Louis County Police Department's area of responsibility enjoys a lower crime rate than the other municipalities within St. Louis County but patrolled by another agency (twenty-three percent lower), than the entire State of Missouri (thirty-two percent lower) and a lower crime rate than the United States of America (nineteen percent lower).



A crime is considered cleared when a suspect is identified, arrested and turned over to the courts for prosecution. It can also be considered cleared when circumstances outside the control of the police Department prevent an arrest or prosecution, such as the suspect is deceased, is already incarcerated, or cannot be extradited to face the charges. In 2012, the St. Louis County Police Department's Crimes Against Persons clearance rates rose to 79.1 percent and Crimes Against Property clearance rates rose to 38.3 percent. With ten times as many property crimes as there are crimes against persons, the overall clearance rate, persons and property combined, isn't as high as the individual categories. The Department's overall clearance rate increased from 36.1 percent solved in 2011 to 42.6 percent solved in 2012. Because national data isn't yet available at the time of printing, the St. Louis County Police Department has to go back a year to 2011 to make a comparison to national levels. St. Louis County's 68.1 percent clearance rate for crimes against persons in 2011 was still higher than the national 47.7 percent rate and St. Louis County's clearance rate for crimes against property was 32.6 percent compared to the national 18.6 percent rate. The St. Louis County Police Department consistently outperforms most other departments in successfully closing cases.

PART II CRIME STATISTICS
Unincorporated and Contract Areas**
2011 - 2012 Comparison

Crime Classification	Jan-Dec 2011	Jan-Dec 2012	Percent Change 2011-2012
Drug/Narcotic Violations	3,521	3,325	- 5.6%
Destruction/Damage/Vandalism Of Property	2,903	2,647	- 8.8%
Disorderly Conduct	1,613	1,669	+ 3.5%
Driving Under The Influence	1,334	1,328	- 0.4%
Misc. Offenses Not Otherwise Classified	975	981	+ 0.6%
Runaway	570	600	+ 5.3%
Fraud	555	562	+ 1.3%
Trespassing	553	560	+ 1.3%
Violation County/Municipal Ord. Not Classified	387	557	+ 43.9%
Criminal Nonsupport	510	524	+ 2.7%
Curfew Violation	424	321	- 24.3%
Weapon Law Violations	343	283	- 17.5%
Other Sex Offenses	221	277	+ 25.3%
Liquor Law Violations	265	232	- 12.5%
Stolen Property Offenses	190	211	+ 11.1%
Family Offenses, Nonviolent	138	138	+ 0.0%
Bad Checks	176	137	- 22.2%
Embezzlement	140	125	- 10.7%
Tampering With Auto Not Otherwise Classified	94	108	+ 14.9%
Counterfeiting	64	84	+ 31.3%
Forgery	103	80	- 22.3%
Unlawful Flight To Avoid Prosecution	68	74	+ 8.8%
Drug Equipment Violations	43	65	+ 51.2%
Violation Of Motor Vehicle Laws	55	65	+ 18.2%
Violation Of Road And Driving Laws	66	64	- 3.0%
Pornography/Obscene Literature And Objects	81	47	- 42.0%
Prostitution	26	33	+ 26.9%
Air/Water Pollution Violations	29	32	+ 10.3%
Littering	21	24	+ 14.3%
Bomb Threat	17	17	+ 0.0%
Other Offenses (23)	97	102	+ 5.2%

** Does not include the City of Jennings contract

PROFESSIONAL STANDARDS

The Bureau of Professional Standards ensures the integrity of the Department by objective and comprehensive investigation of all allegations of misconduct by any Department employee. In addition, the Bureau of Professional Standards analyzes use of force incidents to determine if there are patterns or trends that indicate the need for additional training, equipment modifications and/or policy revisions.

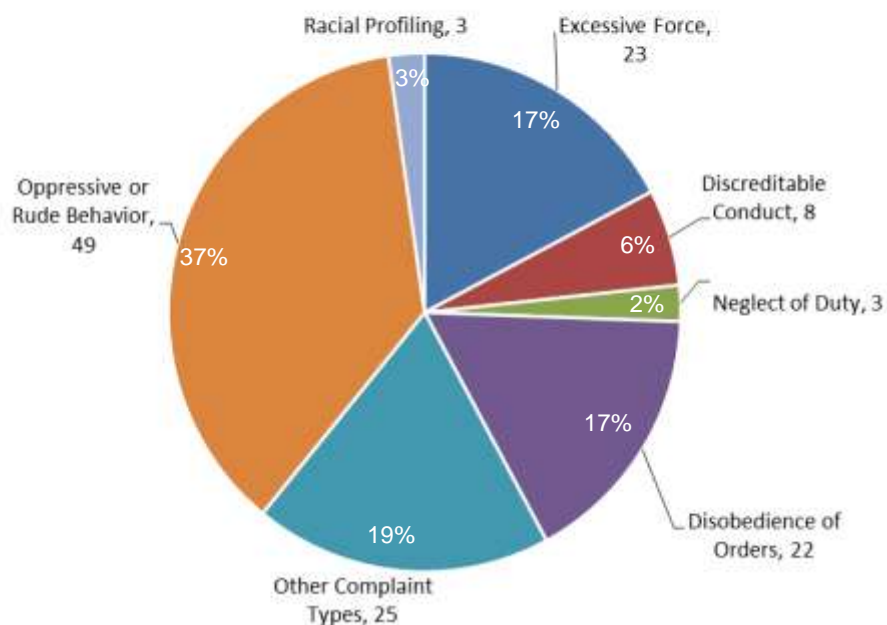
Total complaints received by the Department in 2012 decreased nine percent compared to 2011. Internal complaints (those initiated usually by a supervisor but can also be initiated by a coworker) decreased by two percent, while citizen complaints decreased by twenty-one percent. The Department consistently reviews a small number of complaints in relationship to its

activity, considering that our employees have nearly 1.5 million documented interactions with citizens every year. Internal complaints continue to be an important tool for maintaining quality service to the public. The higher number of internal complaints is a testament to the high standards Department supervisors expect.

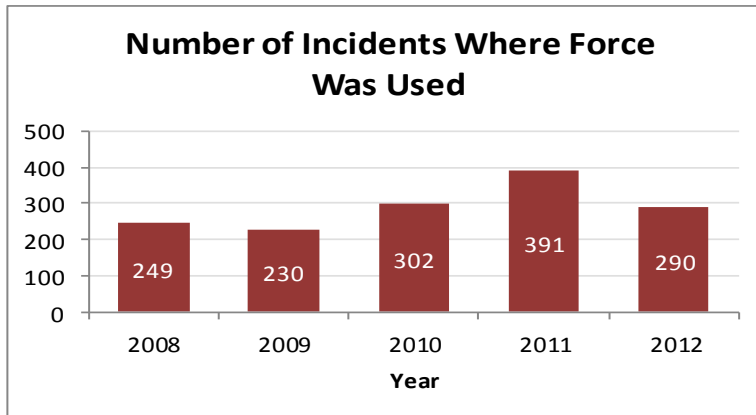
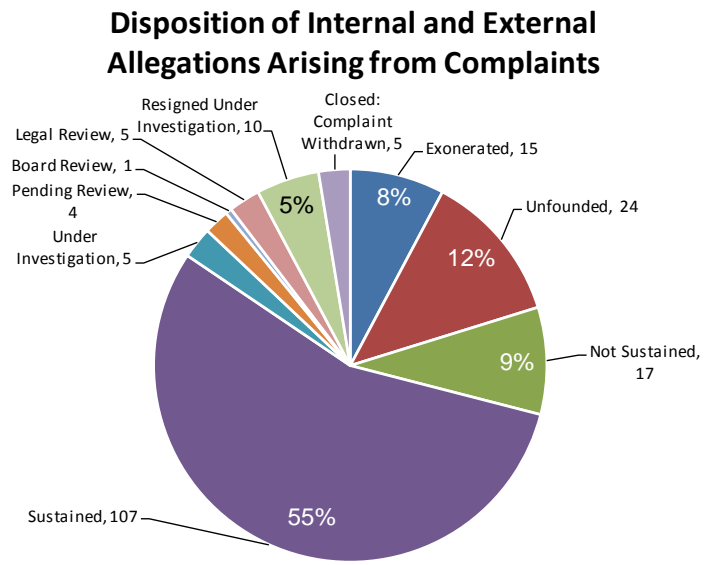
Number of Complaints Received 2011 - 2012			
Type of Complaint	2011	2012	Percent of Change
Citizen	81	64	- 21.0%
Internal	135	132	- 2.2%
<i>Total</i>	<i>216</i>	<i>196</i>	<i>- 9.3%</i>

As shown in the above table, there were a total of 64 citizen complaint cases in 2012. However, each complaint or case may involve multiple officers and/or multiple allegations. In 2012 there were a total of 133 allegations contained in these 64 complaints. The chart to the right represents the seven most recorded allegations in 2012. A third of all allegations received from citizens in 2012 were for oppressive or rude behavior. Allegations of racial profiling, excessive force, discreditable conduct, neglect of duty and disobedience of orders round out the top seven allegations.

Types of Allegations within Citizen Complaints - 2012



The dispositions of allegations arising from complaints, both citizen and internal, are categorized into multiple areas. An allegation can be Sustained, which indicates that there was sufficient evidence to support the allegation; Not Sustained, which indicates that the evidence was insufficient to prove or disprove the allegation; Closed, which is used when the complainant refuses to cooperate with the investigation or when the employee being investigated is no longer employed with the Department; Unfounded, which indicates the allegation was false or the incident did not occur; or Exonerated, which indicates that the incident occurred, but was found to be lawful and proper. Because investigations can take beyond ninety days and can span from one year to the next for a disposition, there remain five allegations from 2012 that are under investigation as of the preparation of this Annual Report.



St. Louis County police officers were involved in 290 incidents where force was used in 2012, a twenty-six percent decrease from 2011 when there were 391 incidents. The 290 incidents where force was used is a fraction (0.019 percent) of the 1.5 million interactions involving arrests, citations and other types of interactions with the public.

In each incident, officers may use more than one type of force to bring the situation under control. Therefore, in 2012, St. Louis County police officers used 638 types of force, a seven percent increase from the 595 types of force used in 2011.

Types of Force Used 2011 - 2012			
Type of Force	2011	2012	Percent Change
Firearm	3	4	+ 33%
Baton	15	4	- 73%
Striking	48	58	+ 21%
Physical Restraint	200	291	+ 46%
Chemical	85	74	- 13%
Less Lethal (Taser)	223	184	- 17%
Canine	20	13	- 35%
Other	1	10	+ 900%
Total	595	638	+ 7%

INTERNATIONAL ACCREDITATION



CALEA (Commission on Accreditation for Law Enforcement Agencies) is a voluntary, non-governmental agency formed in 1979 by the International Association of Chiefs of Police (IACP), the National Sheriffs' Association (NSA), the National Organization of Black Law Enforcement Executives (NOBLE) and the Police Executive Research Forum (PERF). Together, they have created a body of standards which have furthered the professional level of service offered by local law enforcement agencies.

The accreditation process consists of five general phases:

- I. Application
- II. Self-Assessment
- III. On-Site Assessment
- IV. Commission Review
- V. Maintenance of Accreditation

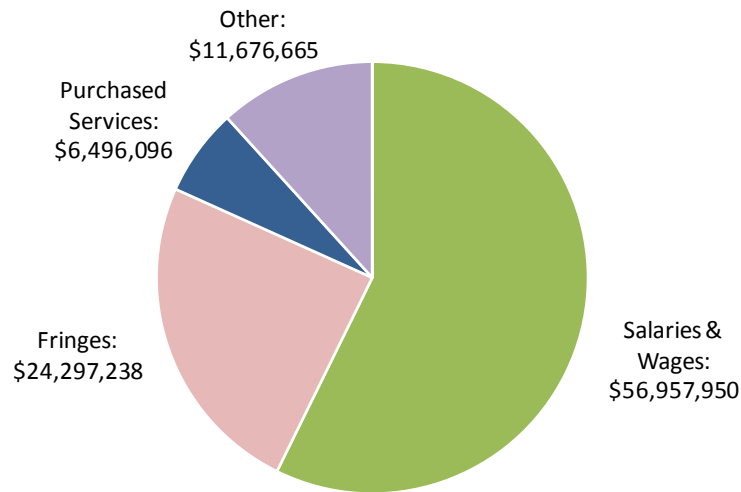


CALEA accreditation is not an easy task. The accreditation process involves reviewing and maintaining compliance with all applicable standards. Every policy and procedure was reviewed and compared to CALEA's professional standards. Proofs of compliance were then compiled to document compliance. For law enforcement accreditation, there are nearly five hundred standards of compliance; over one-hundred fifty standards for training academies and over two hundred standards for communications centers.

Of the more than 17,000 law enforcement agencies, 640 training academies and 8,300 communications centers in the United States, approximately 600 law enforcement agencies, 27 training academies and 65 communications centers have received full accreditation through CALEA. Additionally, with the successful accreditation of the St. Louis County Police Department's Bureau of Communications in March of 2010, the Department received the Tri-Arc Award. This award is given only to agencies that have achieved the highest level of accreditation in all three of these assessment areas (Law Enforcement, Training Academy and Communications). The St. Louis County Police Department is one of only seven agencies (as of December 2012) internationally that hold the Tri-Arc Award and the first in the State of Missouri to receive such honors.



2012 Actual Expenditures



The St. Louis County Police Department provides police services to the citizens of Unincorporated St. Louis County and to the various municipalities and other political subdivisions that contract with the Department for services. The St. Louis County Police Department also provides supplemental resources to municipal police departments; to provide all of these services, Department expenditures totaled \$ 99,427,949 in 2012.

The largest portion of the annual police budget is allocated to salaries and wages. In 2012, personnel costs such as salaries, wages and fringe benefits represented eighty-two percent of the budget. Vehicle maintenance costs, professional services and utilities are some of the expenses included in purchased services, which accounted for seven percent of the 2012 budget. The remainder of the budget was devoted to expenses such as capital outlays, uniforms, office materials, memberships, out of town travel and training expenses.



POLICE SERVICES

EMERGENCY 911

Resources

General Information	314-889-2341
TTY Hearing Impaired	911 or 314-889-2345
Police Reports/Records Check	314-615-5317
Municipal Services Unit	314-615-0184
Government Center Information	314-615-5000
Safe Schools Hotline	314-889-SAFE
Drug Hotline	314-863-DOPE

Precinct Stations

North County (1 st) Precinct	314-355-1200
Central County (2 nd) Precinct	314-567-9926
Afton Southwest (3 rd) Precinct	314-638-5550
South County (4 th) Precinct	314-892-1510
City of Fenton (5 th) Precinct	636-349-8120
City of Wildwood (6 th) Precinct	636-458-9194
West County (7 th) Precinct	636-225-0425

Headquarters

St. Louis County Police	314-889-2341
7900 Forsyth Boulevard	
St. Louis, Missouri 63105	

Division of Criminal Investigation

General Information	314-615-5400
Child Abuse Unit	314-615-5370
Domestic Violence Unit	314-615-8624

St. Louis County Police Department • 7900 Forsyth Blvd. | St. Louis, MO 63105

*The St. Louis County Police Department offers exciting and rewarding police officer and civilian career opportunities to candidates who have the skill and determination to succeed in the exciting profession of law enforcement.
Join us in providing services to a diverse community!*



*The **BEST** Place
for the **BEST**
People to Work!*

For information regarding the types of positions the St. Louis County Police Department offers, the skills needed for each, and the employee benefits offered, visit our website at

www.stlouisco.com/police

or call (314)615-5488



*Internationally
Accredited*

This Report Prepared By:
The St. Louis County Police Department
Planning and Analysis Unit
7900 Forsyth Boulevard
St. Louis, Missouri 63105